



National Statistics Office of Georgia

# NUMBER OF POPULATION AS OF JANUARY 1, 2019



30.04.2019

[www.geostat.ge](http://www.geostat.ge)

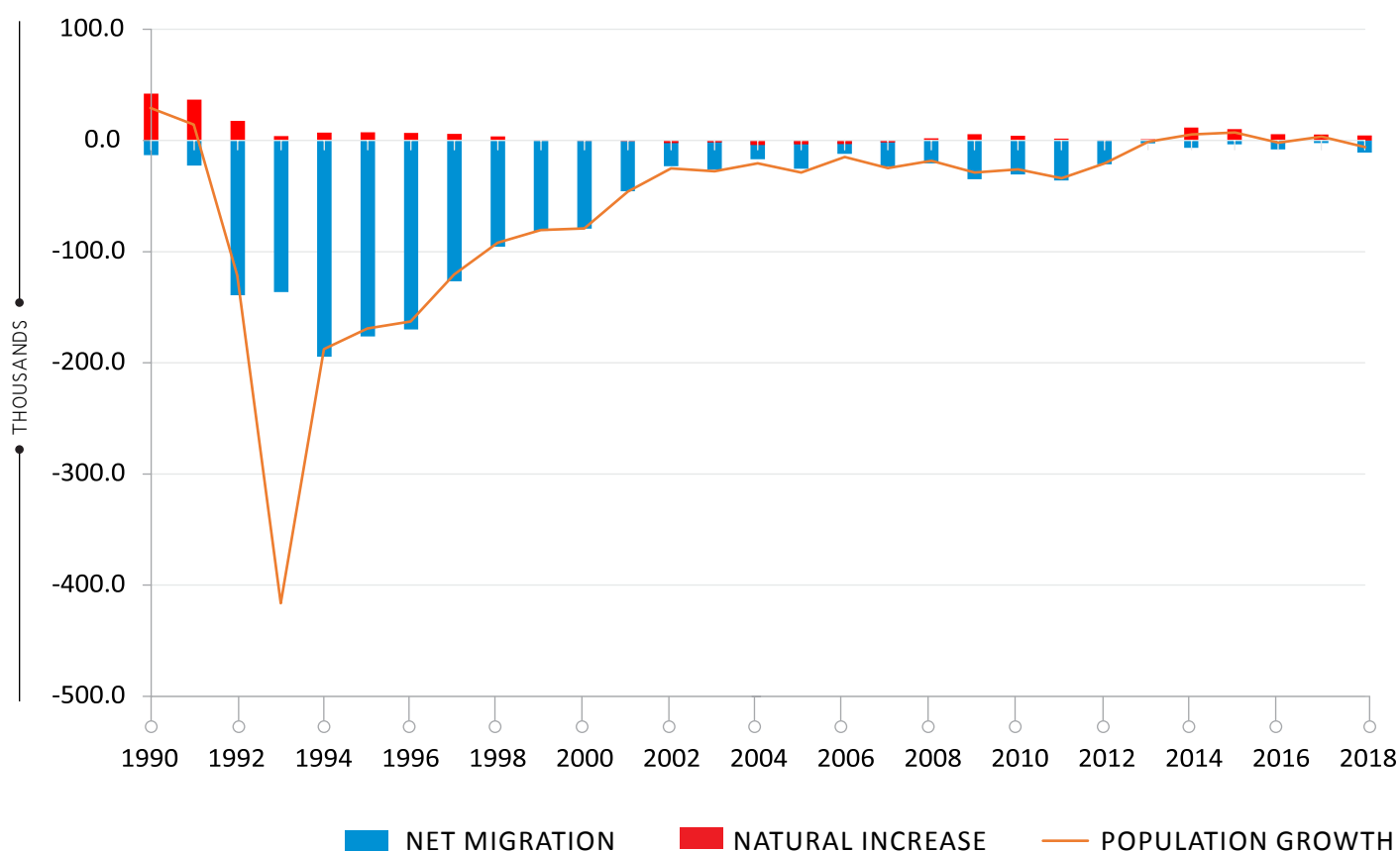
## NUMBER OF POPULATION AS OF JANUARY 1, 2019<sup>1</sup>

As of January 1, 2019 the population of Georgia equaled 3 723.5 thousand persons, registering 0.2 percent decrease from the previous year.

It should be mentioned that 2018 resulted in the positive natural increase (4 614) and negative net migration (-10 783).

CHART № 1

### COMPONENTS OF POPULATION CHANGE, THOUSANDS



As of January 1, 2019 58.7 percent of the population lived in urban settlements. At the same time, almost one third of total population lived in the capital Tbilisi.

<sup>1</sup> Data do not cover occupied territories

## NATIONAL STATISTICS OFFICE OF GEORGIA

30.04.2019

**TABLE 1: NUMBER OF POPULATION AS OF JANUARY 1, 2019 BY REGIONS AND URBAN/RURAL SETTLEMENTS, THOUSANDS**

REGIONS	TOTAL	AMONG THEM:	
		URBAN	RURAL
<b>GEORGIA</b>	3 723.5	2 184.3	1 539.1
Tbilisi	1 171.1	1 140.7	30.4
Adjara A.R.	349.0	197.7	151.4
Guria	109.4	31.4	78.0
Imereti	497.4	244.9	252.5
Kakheti	312.5	71.0	241.5
Mtskheta-Mtianeti	93.6	22.1	71.6
Racha-Lechkhumi and Kvemo Svaneti	29.7	6.8	22.9
Samegrelo-Zemo Svaneti	316.2	125.0	191.2
Samtskhe-Javakheti	154.1	54.4	99.8
Kvemo Kartli	433.2	188.4	244.7
Shida Kartli	257.3	101.9	155.4

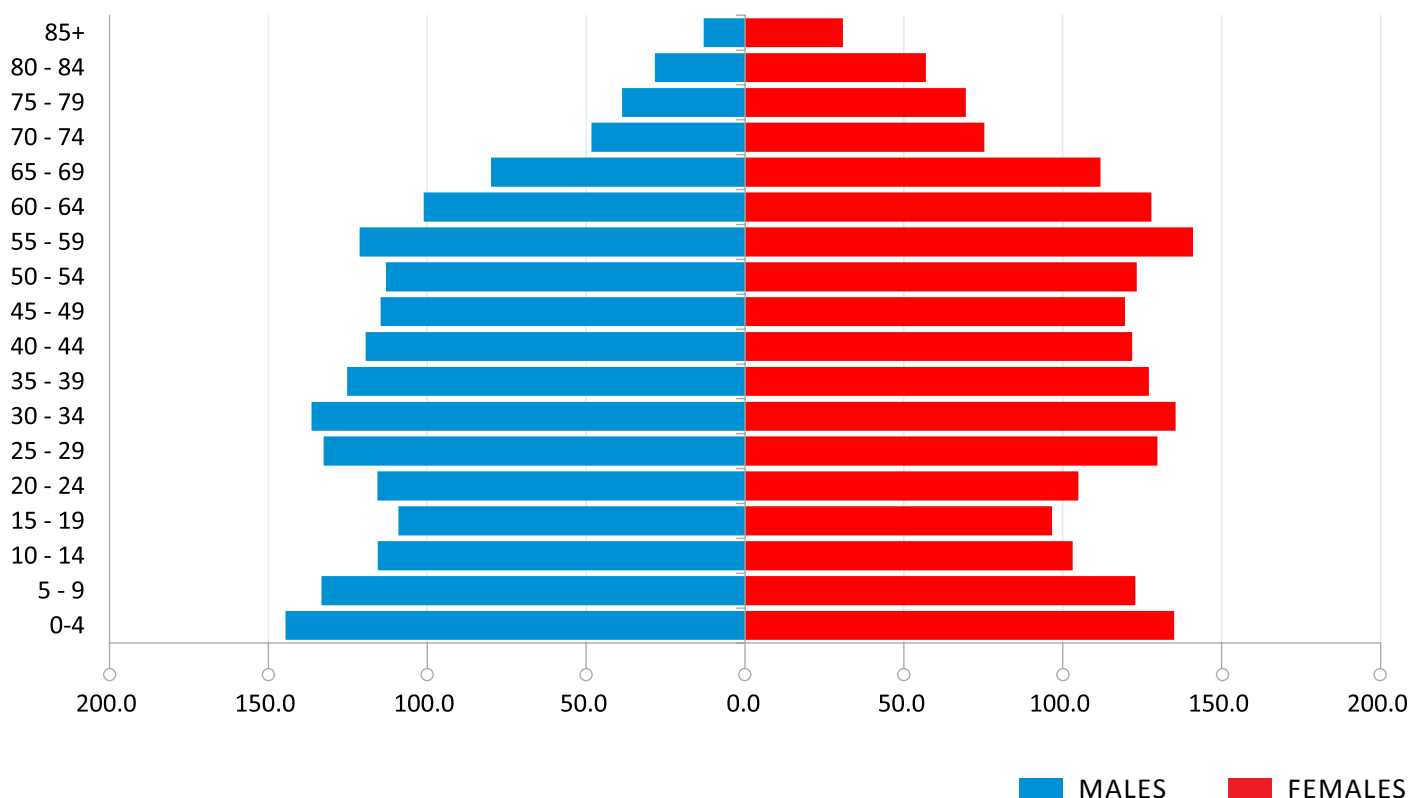
**Note:** Individual figures may not sum up to the total due to rounding.

### POPULATION BY AGE AND SEX

As of January 1, 2019 the share of persons aged 0-14 equaled 20.3 percent, the share of working age population (15-64 years old) – 64.9 percent, while the share of elderly (65 years and older) was 14.8 percent.

CHART № 2

## AGE AND SEX PYRAMID, AS OF JANUARY 1, 2019, THOUSANDS



Compared to previous year, the number of male population as of January 1, 2019 remained almost unchanged and equaled 1 790.9 thousand persons, while the number of female population decreased by 0.3 percent and totaled 1 932.6 thousand persons. In Georgia, 48 percent are male and 52 percent are female population.

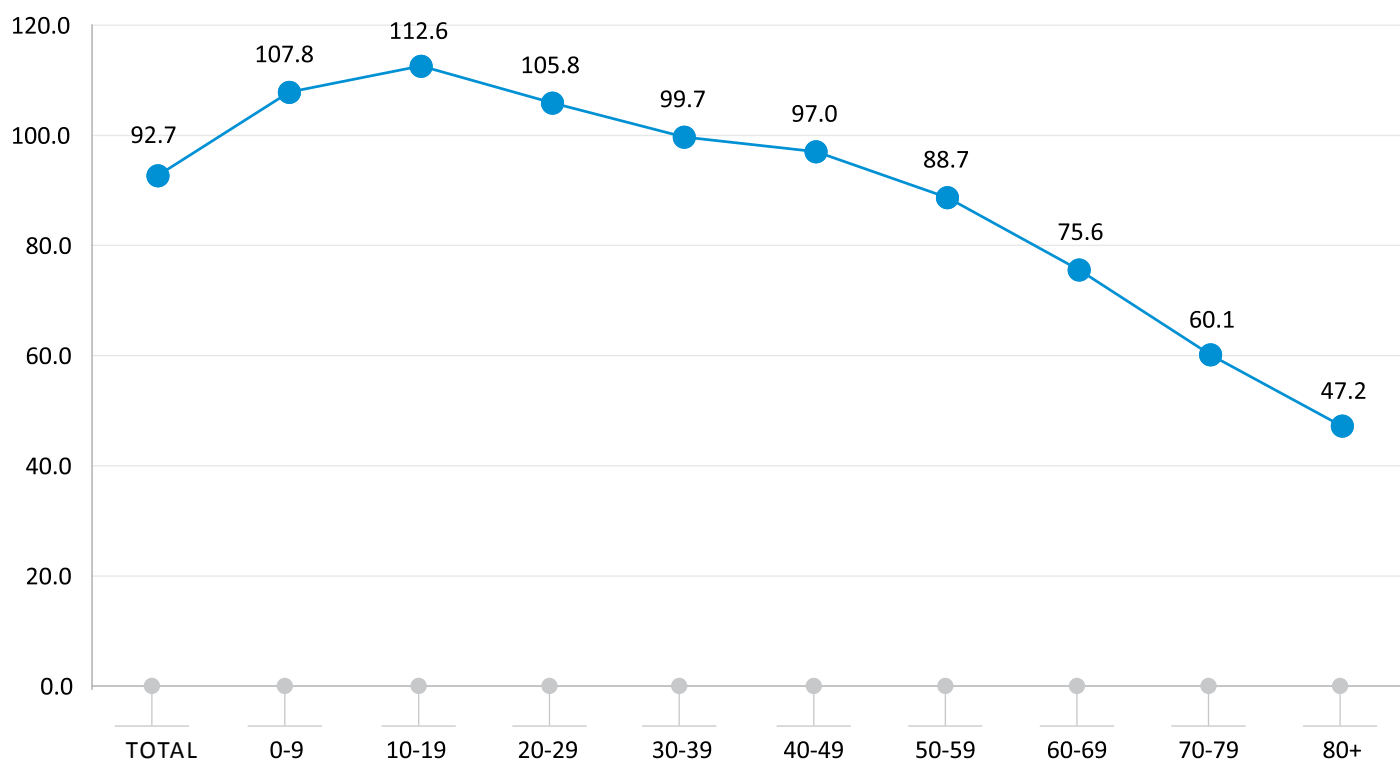
The sex ratio, i.e. number of men per 100 women, equaled 92.7. It is worth mentioning, that under the age of 35 the number of men exceeds that of women, while women outnumber men in the age group of 35 and over, due to females' higher life expectancy.

## NATIONAL STATISTICS OFFICE OF GEORGIA

30.04.2019

### CHART № 3

#### SEX RATIO BY AGE GROUPS, AS OF JANUARY 1, 2019



In 2018 the life expectancy at birth equaled 74.0 years, including 69.7 years for males and 78.2 years for females.

As of January 1, 2019 the median age of population equals 37 years.

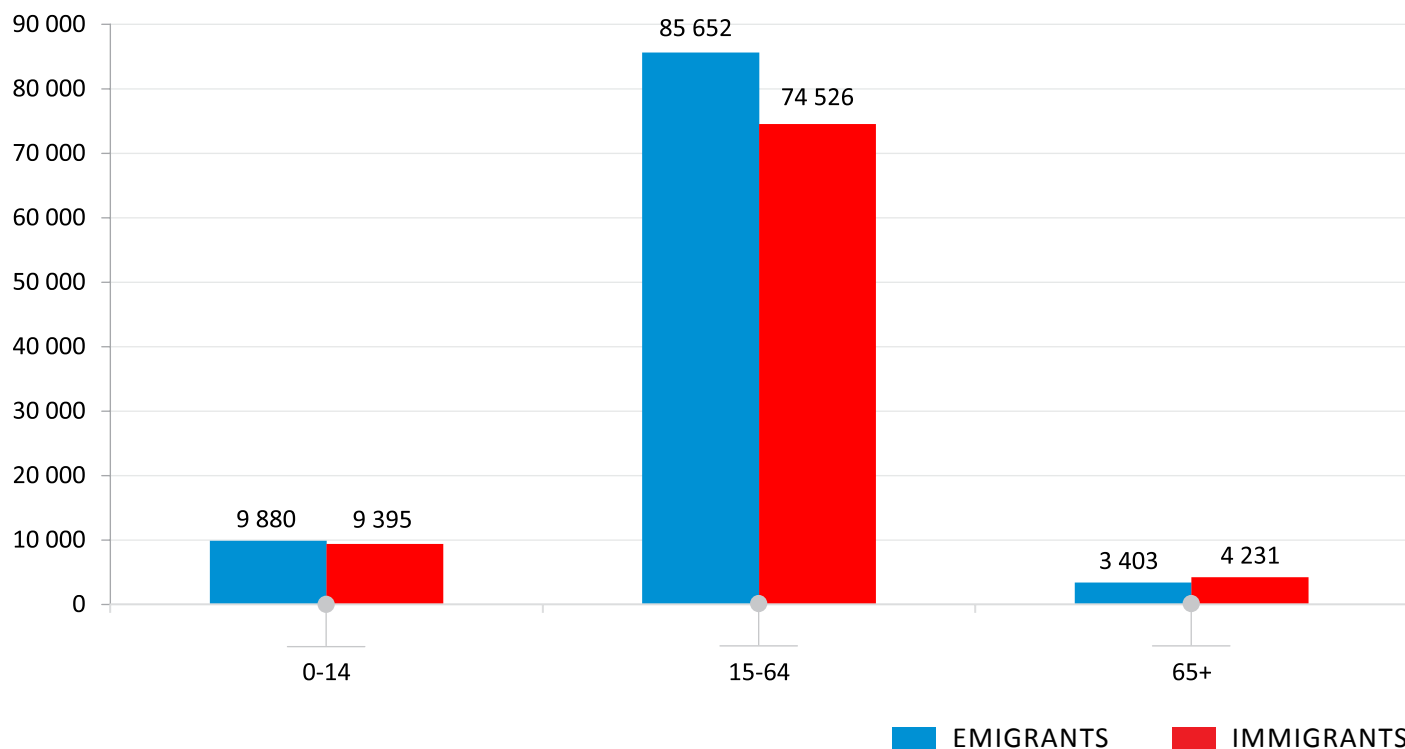
## MIGRATION

In 2018 the number of emigrants was 98 935 persons increasing by 15.8 percent compared to the previous year. The number of immigrants increased by 5.9 percent, amounting to 88 152 persons.

In the same time period, 86.6 percent of emigrants and 84.5 percent of immigrants represent the working age population (15-64 year age group).

CHART № 4

NUMBER OF IMMIGRANTS AND EMIGRANTS BY MAIN AGE GROUPS, 2018



Contact persons:

Shorena Tsiklauri, Tel.: 2 36 72 10 (601), E-mail: [shtsiklauri@geostat.ge](mailto:shtsiklauri@geostat.ge)

Mariam Kavelashvili, Tel.: 2 36 72 10 (020), E-mail: [mkavelashvili@geostat.ge](mailto:mkavelashvili@geostat.ge)