



National Statistics Office of Georgia

# NUMBER OF POPULATION

AS OF JANUARY 1  
2020



30.04.2019

[www.geostat.ge](http://www.geostat.ge)

## NATIONAL STATISTICS OFFICE OF GEORGIA

30.04.2020

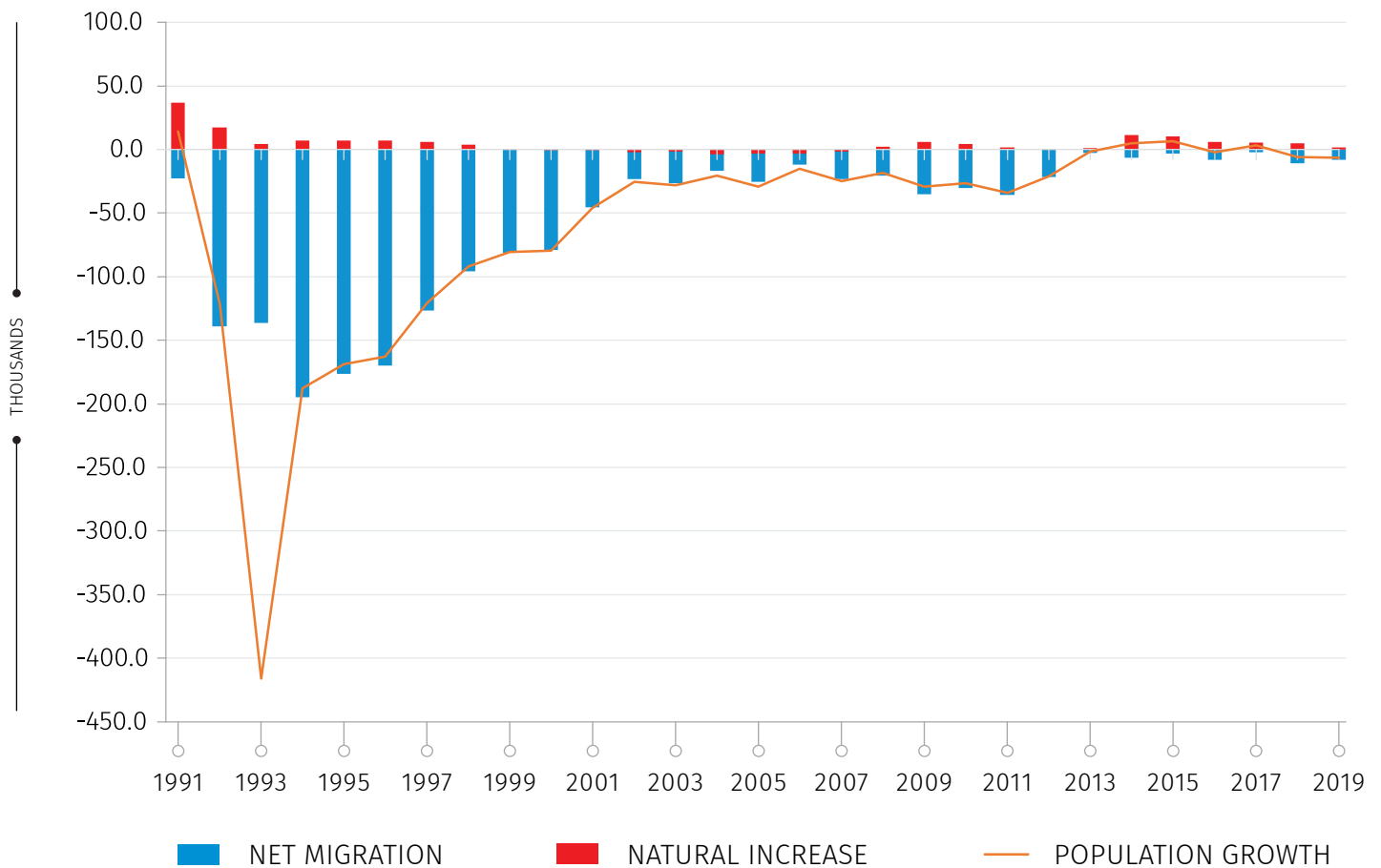
### NUMBER OF POPULATION AS OF JANUARY 1, 2020<sup>1</sup>

As of January 1, 2020, the population of Georgia equals 3 716.9 thousand persons, registering a 0.2 percent decrease from the previous year.

2019 resulted in the positive natural increase (1 637) and negative net migration (-8 243).

CHART №1

#### COMPONENTS OF POPULATION CHANGE, THOUSANDS



As of January 1, 2020, 59.0 percent of the population lived in urban settlements. At the same time, almost one third of total population lives in the capital Tbilisi.

<sup>1</sup> Data do not cover occupied territories

30.04.2020

TABLE №1

NUMBER OF POPULATION AS OF JANUARY 1,  
2020 BY REGIONS AND URBAN/RURAL SETTLEMENTS, THOUSANDS

REGIONS	TOTAL	AMONG THEM:	
		URBAN	RURAL
<b>GEORGIA</b>	<b>3 716.9</b>	<b>2 194.5</b>	<b>1 522.4</b>
C. Tbilisi	1 184.8	1 154.3	30.5
Adjara A.R.	351.9	200.6	151.3
Guria	108.1	31.2	76.9
Imereti	487.0	240.4	246.6
Kakheti	310.1	70.7	239.4
Mtskheta-Mtianeti	93.3	22.3	71.0
Racha-Lechkhumi and Kvemo Svaneti	29.1	6.8	22.3
Samegrelo-Zemo Svaneti	311.1	123.4	187.7
Samtskhe-Javakheti	152.1	54.1	98.0
Kvemo Kartli	434.2	189.7	244.5
Shida Kartli	255.1	101.0	154.2

**Note:** Individual figures may not sum up to the total due to rounding.

## NATIONAL STATISTICS OFFICE OF GEORGIA

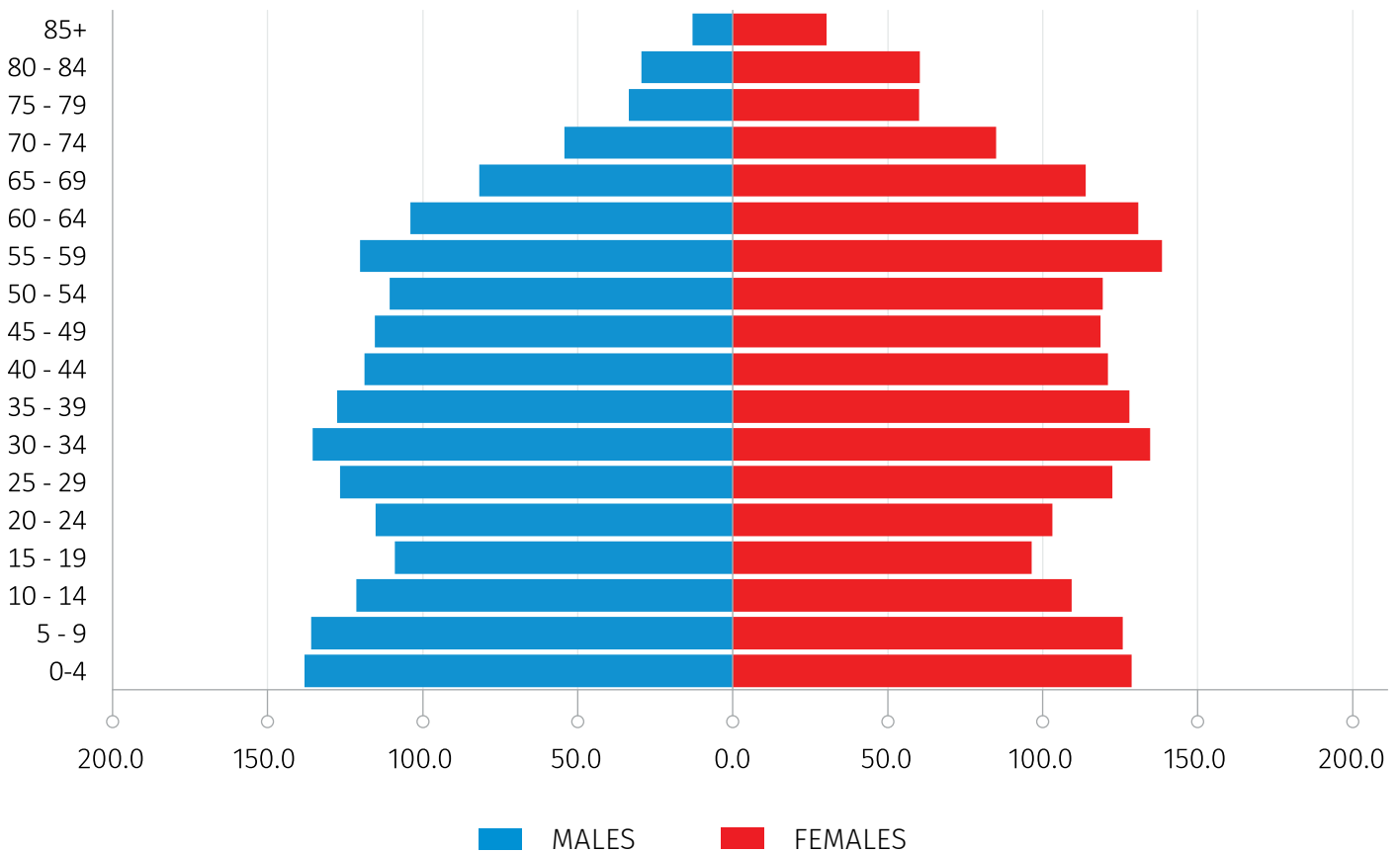
30.04.2020

### POPULATION BY AGE AND SEX

As of January 1, 2020, the share of persons aged 0-14 equals 20.4 percent, the share of working age population (15-64 years old) - 64.5 percent, while the share of elderly (65 years and older) - 15.1 percent.

CHART №2

#### AGE AND SEX PYRAMID, AS OF JANUARY 1, 2020, THOUSANDS



## NATIONAL STATISTICS OFFICE OF GEORGIA

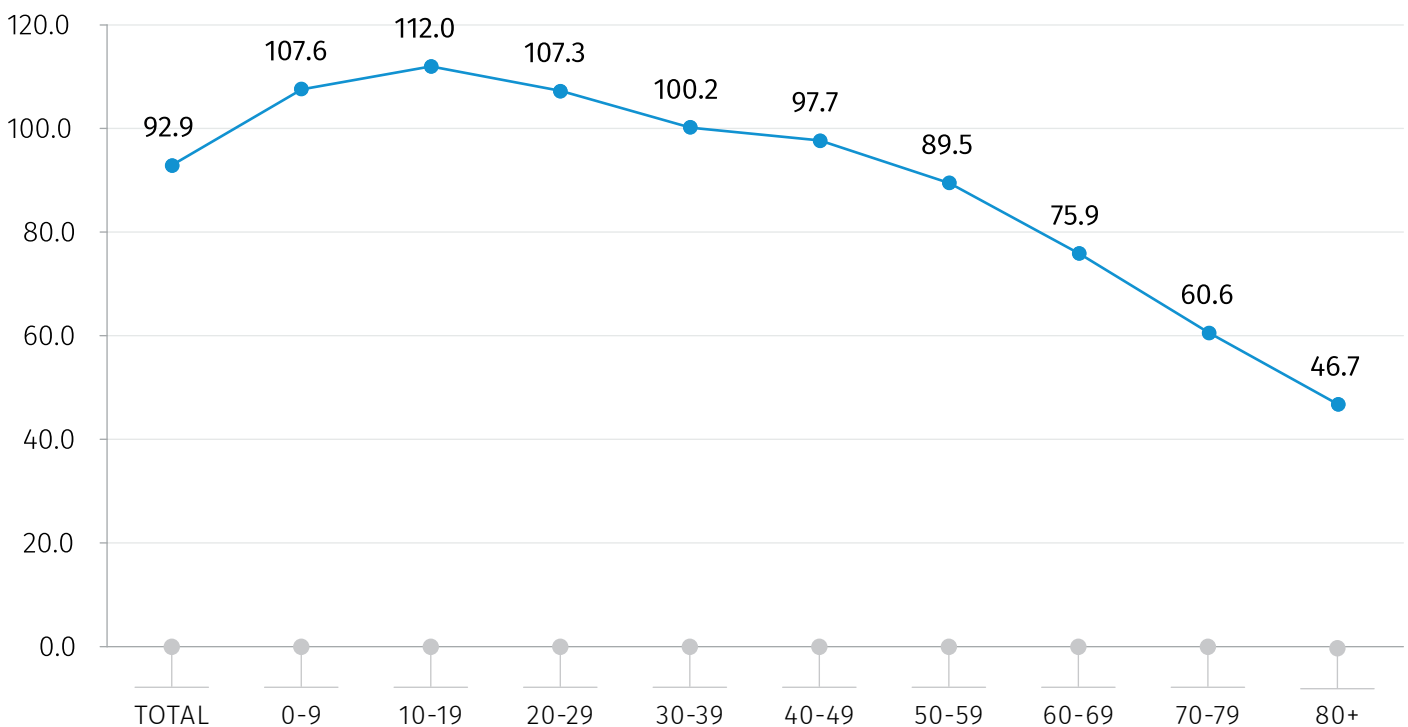
30.04.2020

Compared to previous year, the number of male population as of January 1, 2020 remains almost unchanged and equals 1 790.3 thousand persons, while the number of female population decreased by 0.3 percent and totaled 1 926.6 thousand persons. In Georgia, 48 percent are male and 52 percent are female population.

The sex ratio, i.e. number of men per 100 women, equals 92.9. It is worth mentioning, that under the age of 35 the number of men exceeds that of women, while women outnumber men in the age group of 35 and over, due to females' higher life expectancy.

CHART №3

SEX RATIO BY AGE GROUPS, AS OF JANUARY 1, 2020

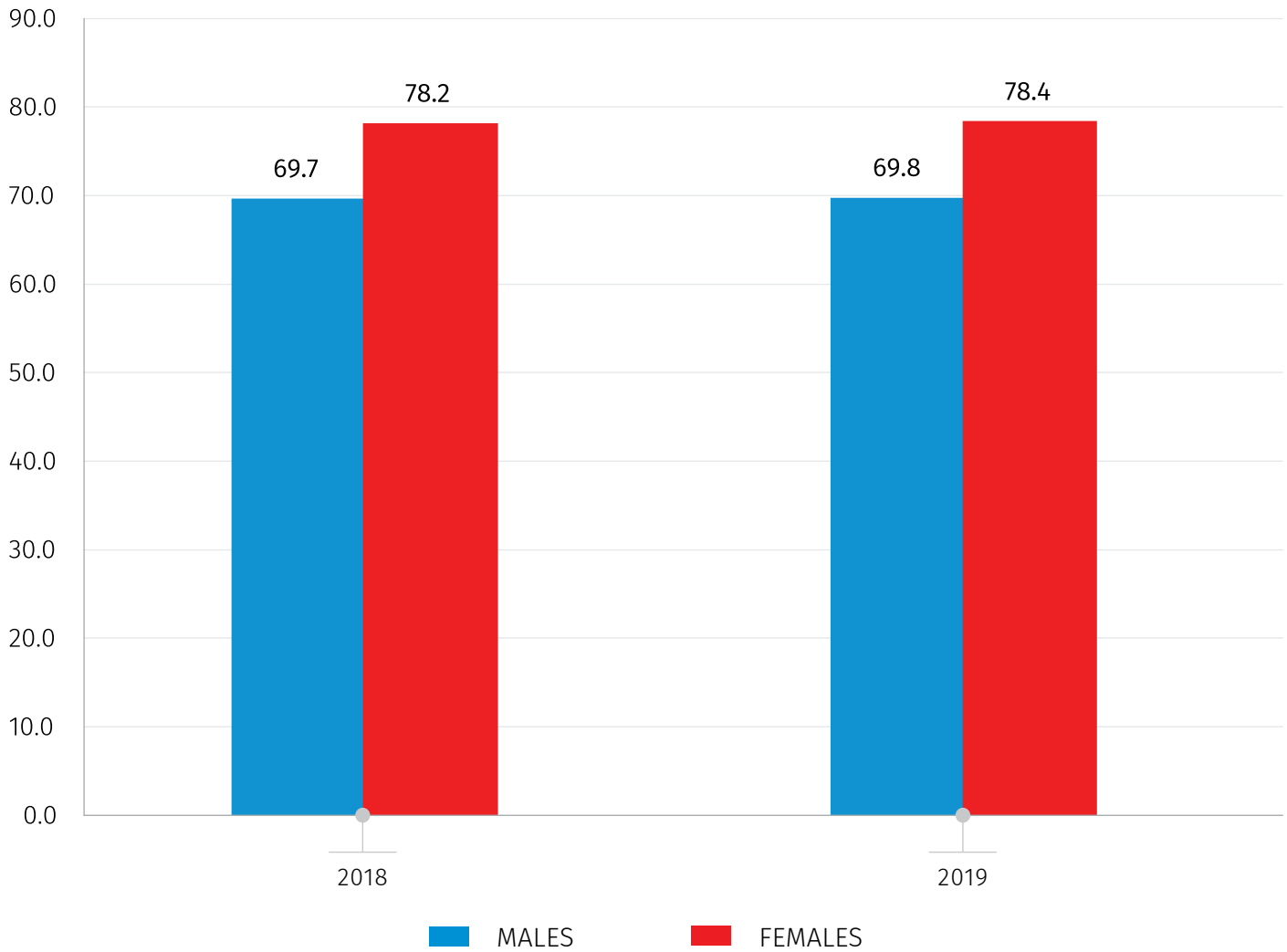


Compared to previous year, In 2019 the life expectancy at birth has increased by 0.1 unit and equals 74.1 years, including 69.8 years for males and 78.4 years for females.

30.04.2020

CHART №4

## LIFE EXPECTANCY AT BIRTH BY SEX, YEARS



As of January 1, 2020, the median age of population equals 37 years.

30.04.2020

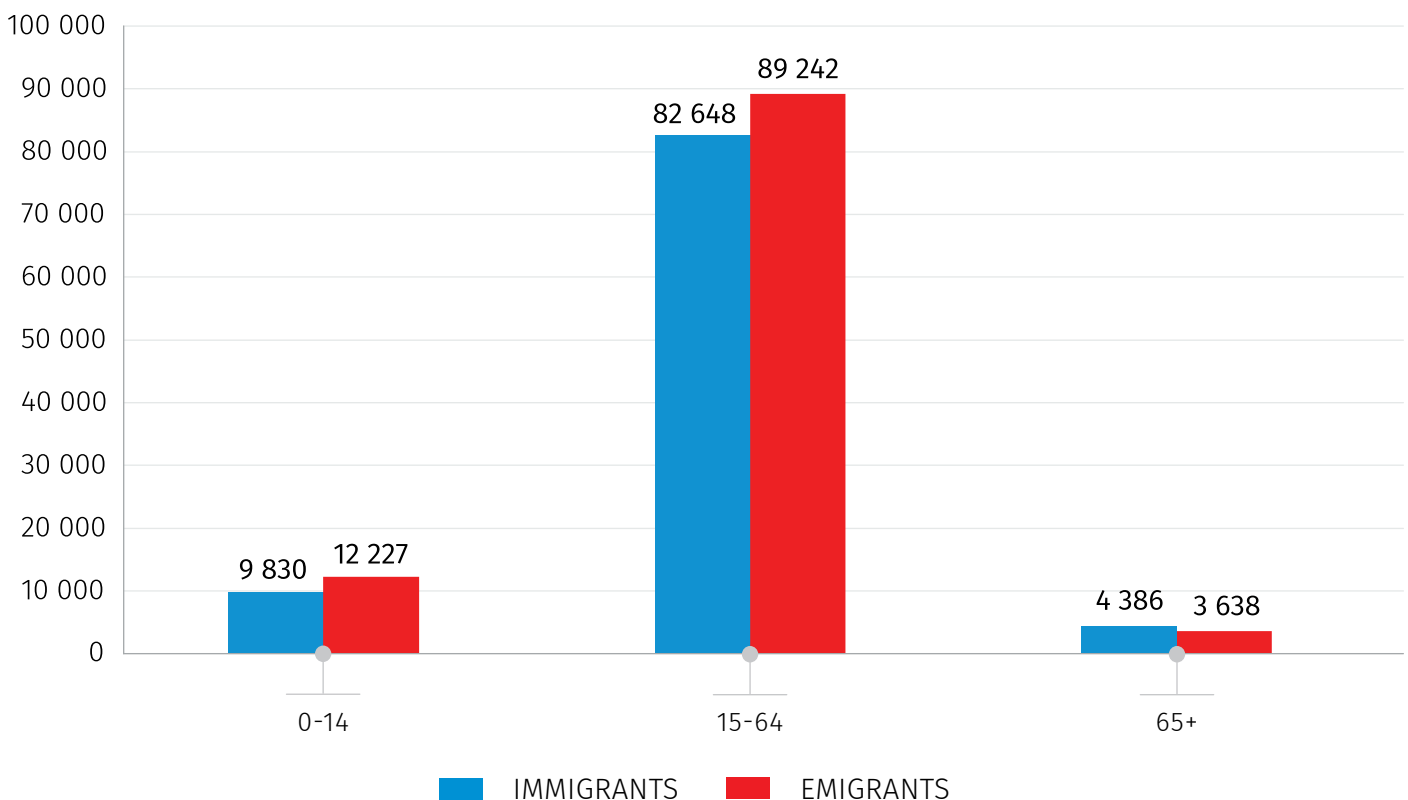
**MIGRATION**

In 2019 the number of emigrants totals 105 107 persons increasing by 6.2 percent compared to the previous year. The number of immigrants increased by 9.9 percent, amounting to 96 864 persons.

In the same time period, 85.3 percent of immigrants and 84.9 percent of emigrants represent the working age population (15-64 year age group).

CHART №5

**NUMBER OF IMMIGRANTS AND EMIGRANTS  
BY MAIN AGE GROUPS, 2019**

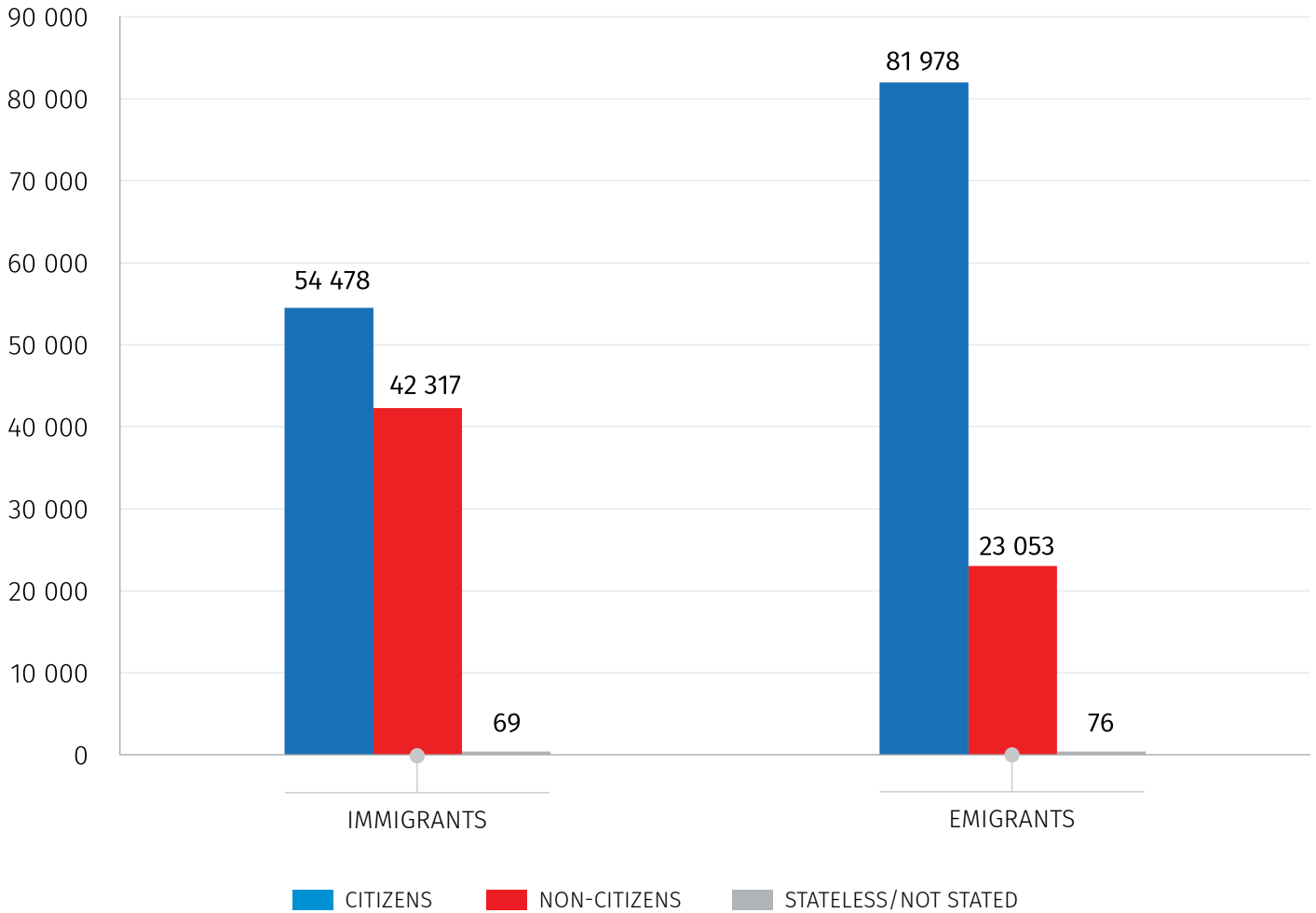


In 2019 56.2 percent of immigrants and 78.0 percent of emigrants are citizens of Georgia.

30.04.2020

CHART №6

NUMBER OF IMMIGRANTS AND EMIGRANTS BY CITIZENSHIP, 2019



CONTACT PERSONS:

Shorena Tsiklauri, Tel.: 2 36 72 10 (601), E-mail: [shtsiklauri@geostat.ge](mailto:shtsiklauri@geostat.ge)

Mariam Kavelashvili, Tel.: 2 36 72 10 (020), E-mail: [mkavelashvili@geostat.ge](mailto:mkavelashvili@geostat.ge)