



National Statistics Office of Georgia

**NUMBER OF POPULATION  
AS OF JANUARY 1  
2021**



29.04.2021

[www.geostat.ge](http://www.geostat.ge)

# NATIONAL STATISTICS OFFICE OF GEORGIA

29.04.2021

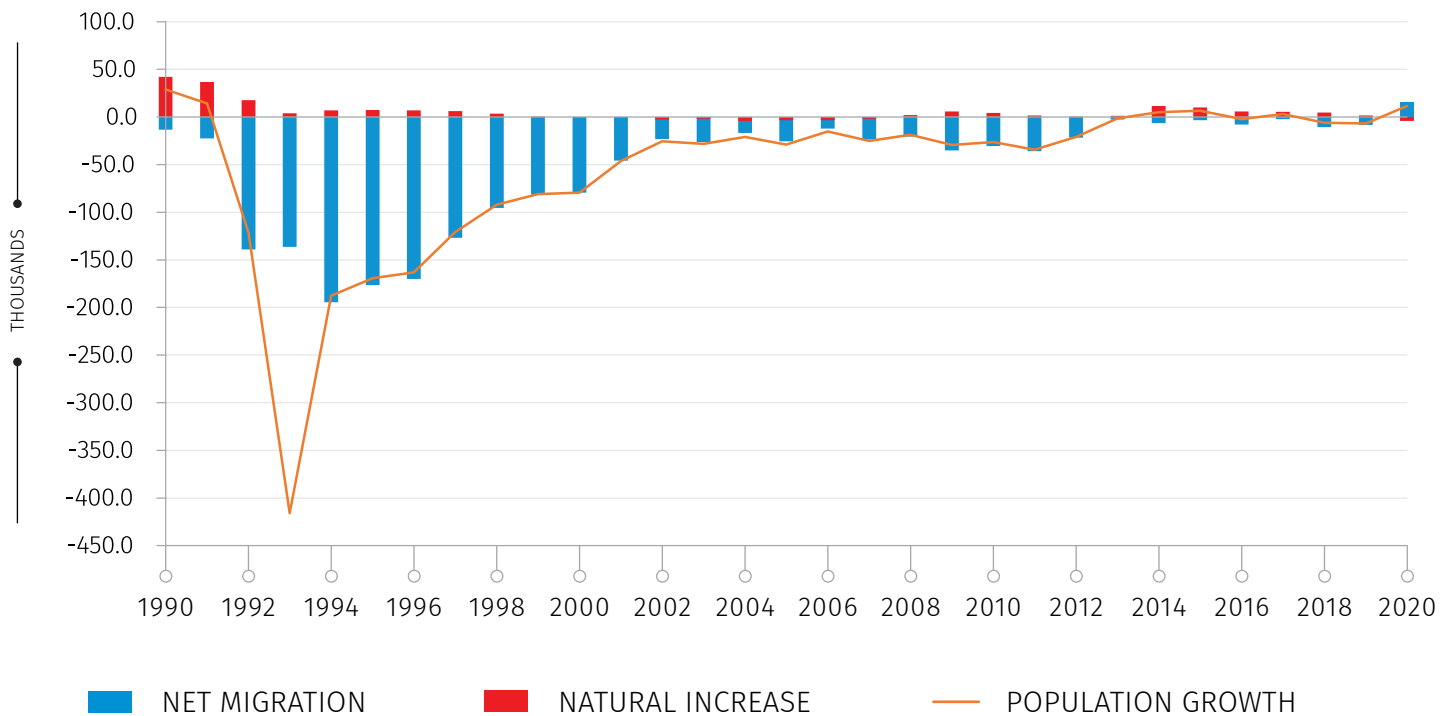
## NUMBER OF POPULATION AS OF JANUARY 1, 2021<sup>1</sup>

As of January 1, 2021, the population of Georgia equals 3 728.6 thousand persons, registering a 0.3 percent increase from the previous year.

It should be mentioned that 2020 resulted in the negative natural increase (-4 017) and positive net migration (15 732).

CHART №1

### COMPONENTS OF POPULATION CHANGE, THOUSANDS



As of January 1, 2021, 59.4 percent of the population lives in urban settlements. At the same time, almost one third of total population lives in Tbilisi.

<sup>1</sup> Data do not cover occupied territories.

29.04.2021

TABLE №1

NUMBER OF POPULATION AS OF JANUARY 1, 2021 BY REGIONS  
AND TYPE OF SETTLEMENTS, THOUSANDS

REGIONS	TOTAL	AMONG THEM:	
		URBAN	RURAL
<b>GEORGIA</b>	<b>3 728.6</b>	<b>2 215.6</b>	<b>1 512.9</b>
C. Tbilisi	1 202.7	1 172.0	30.7
Adjara A.R.	354.9	203.5	151.4
Guria	107.1	31.2	76.0
Imereti	481.5	238.7	242.8
Kakheti	309.6	70.9	238.6
Mtskheta-Mtianeti	93.4	22.6	70.8
Racha-Lechkhumi and Kvemo Svaneti	28.5	6.7	21.8
Samegrelo-Zemo Svaneti	308.4	122.8	185.6
Samtskhe-Javakheti	151.1	54.2	96.9
Kvemo Kartli	437.3	192.3	245.0
Shida Kartli	254.1	100.6	153.4

**Note:** Individual figures may not sum up to the total due to rounding.

# NATIONAL STATISTICS OFFICE OF GEORGIA

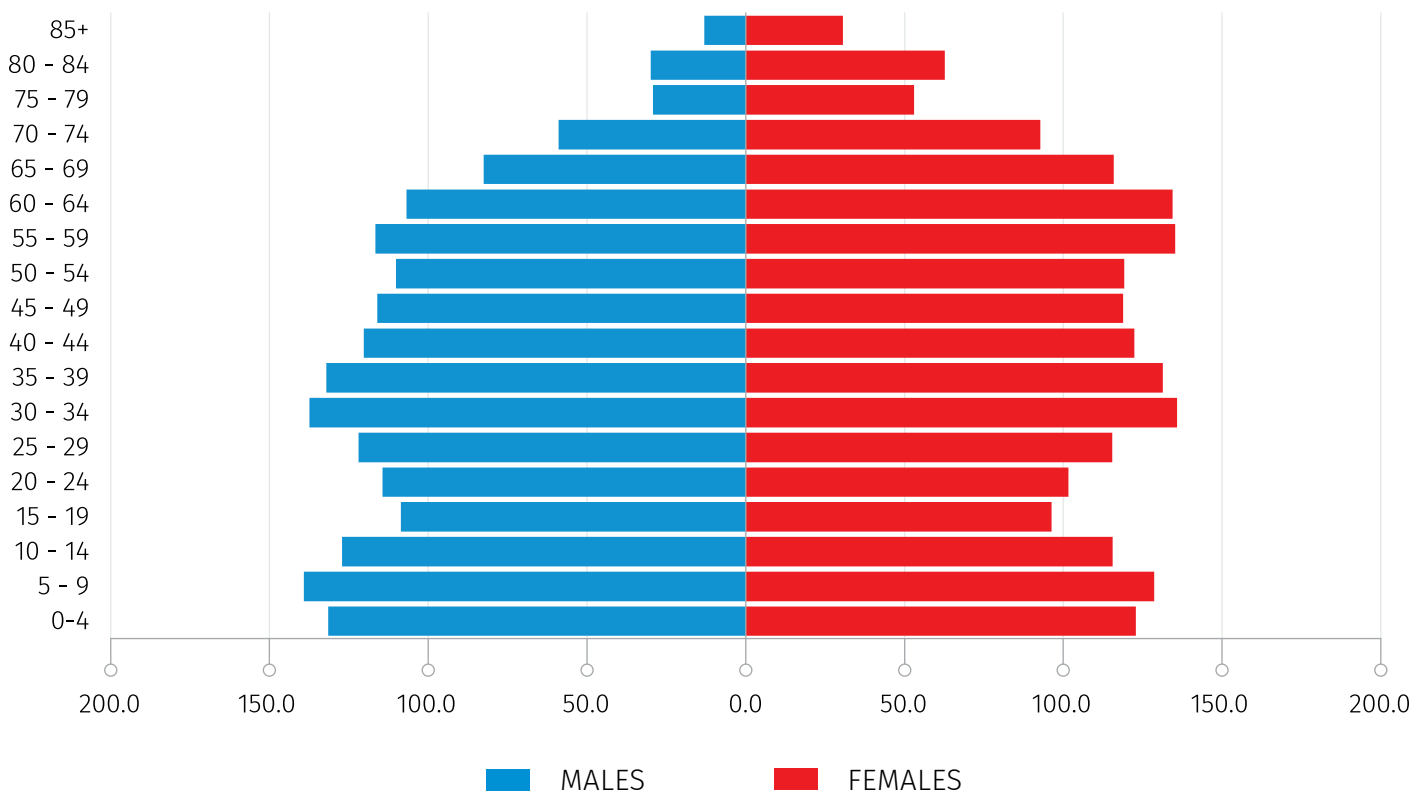
29.04.2021

## POPULATION BY AGE AND SEX

As of January 1, 2021, the share of persons aged 0-14 equals 20.5 percent, the share of working age population (15-64 years old) - 64.2 percent, while the share of elderly (65 years and older) - 15.2 percent.

CHART №2

AGE AND SEX PYRAMID, AS OF JANUARY 1, 2021,  
THOUSANDS



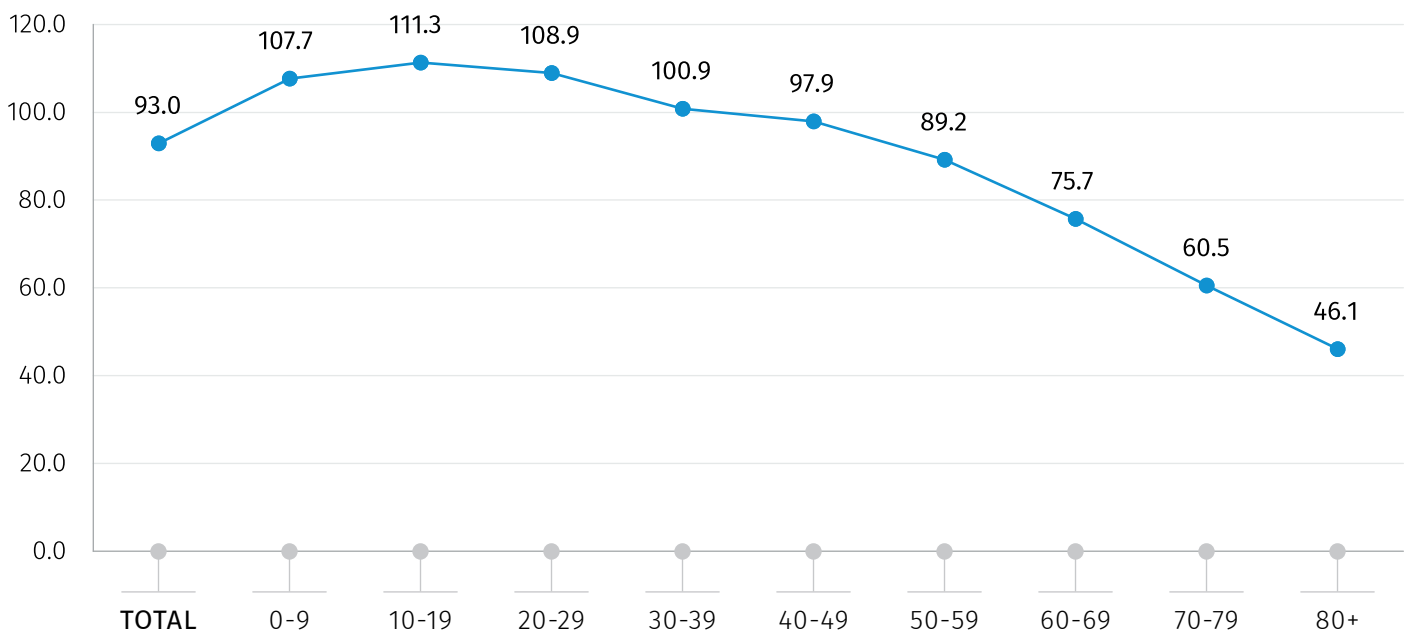
29.04.2021

As of January 1, 2021, the number of male population equaled 1 796.2 thousand persons, and the number of female population - 1 932.4 thousand persons. Compared to previous year, the number of male and female population increased by 0.3 percent.

The sex ratio, i.e. number of men per 100 women, equals 93. It is worth mentioning, that under the age of 40 the number of men exceeds that of women, while the opposite situation is observed for the age group of 40 and over, which could be explained by females' higher life expectancy.

CHART №3

**SEX RATIO BY AGE GROUPS, AS OF JANUARY 1, 2021**

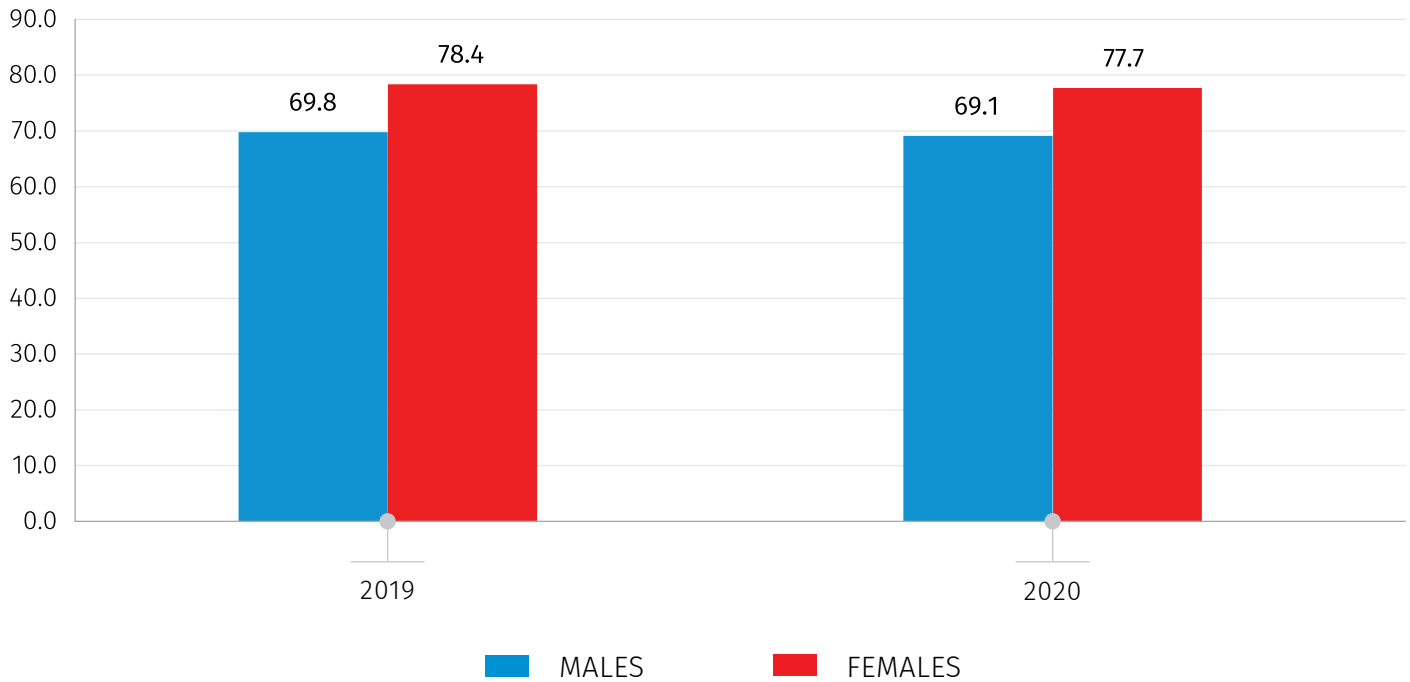


Compared to previous year, in 2020 the life expectancy at birth has decreased by 0.7 unit and equals 73.4 years, including 69.1 years for males and 77.7 years for females.

29.04.2021

CHART №4

## LIFE EXPECTANCY AT BIRTH BY SEX, YEARS



As of January 1, 2021, the median age of population equals 38 years.

29.04.2021

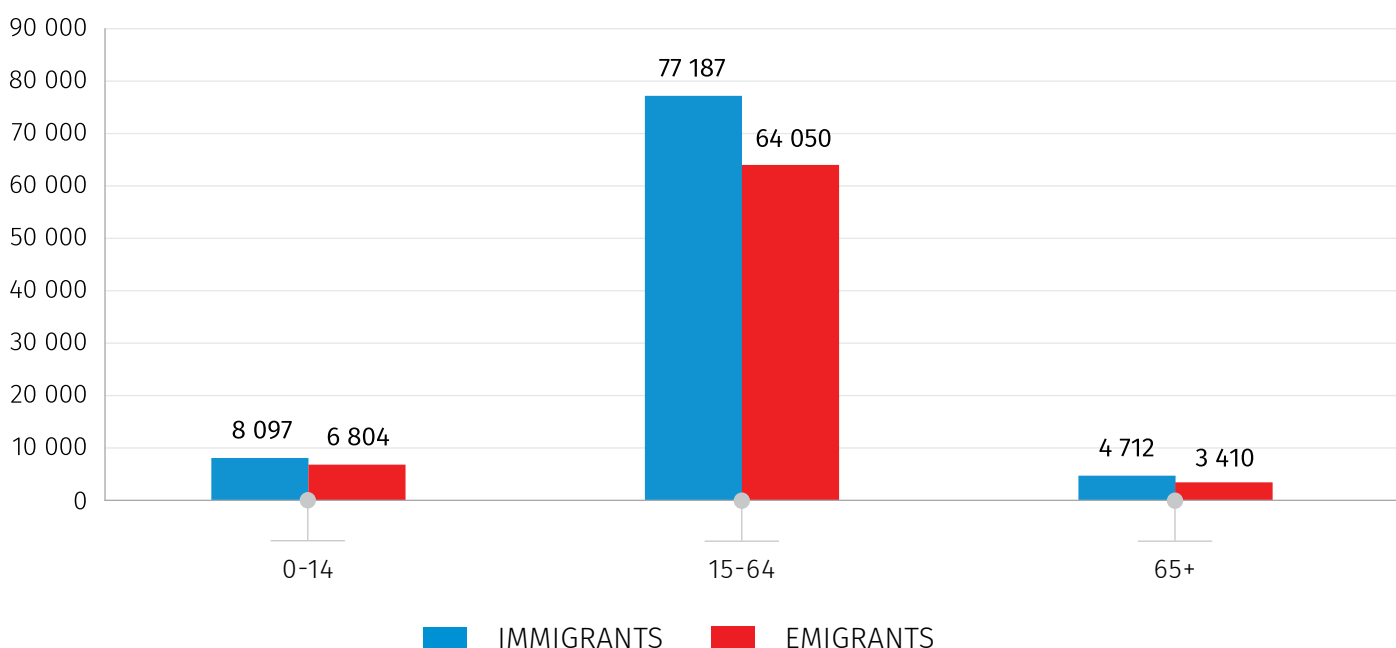
MIGRATION

In 2020, the number of emigrants totals 74 264 persons decreasing by 29.3 percent compared to the previous year. The number of immigrants decreased by 7.1 percent, amounting to 89 996 persons.

In the same time period, 85.8 percent of immigrants and 86.2 percent of emigrants represent the working age population (15-64 year age group).

CHART №5

NUMBER OF IMMIGRANTS AND EMIGRANTS  
BY MAIN AGE GROUPS, 2020

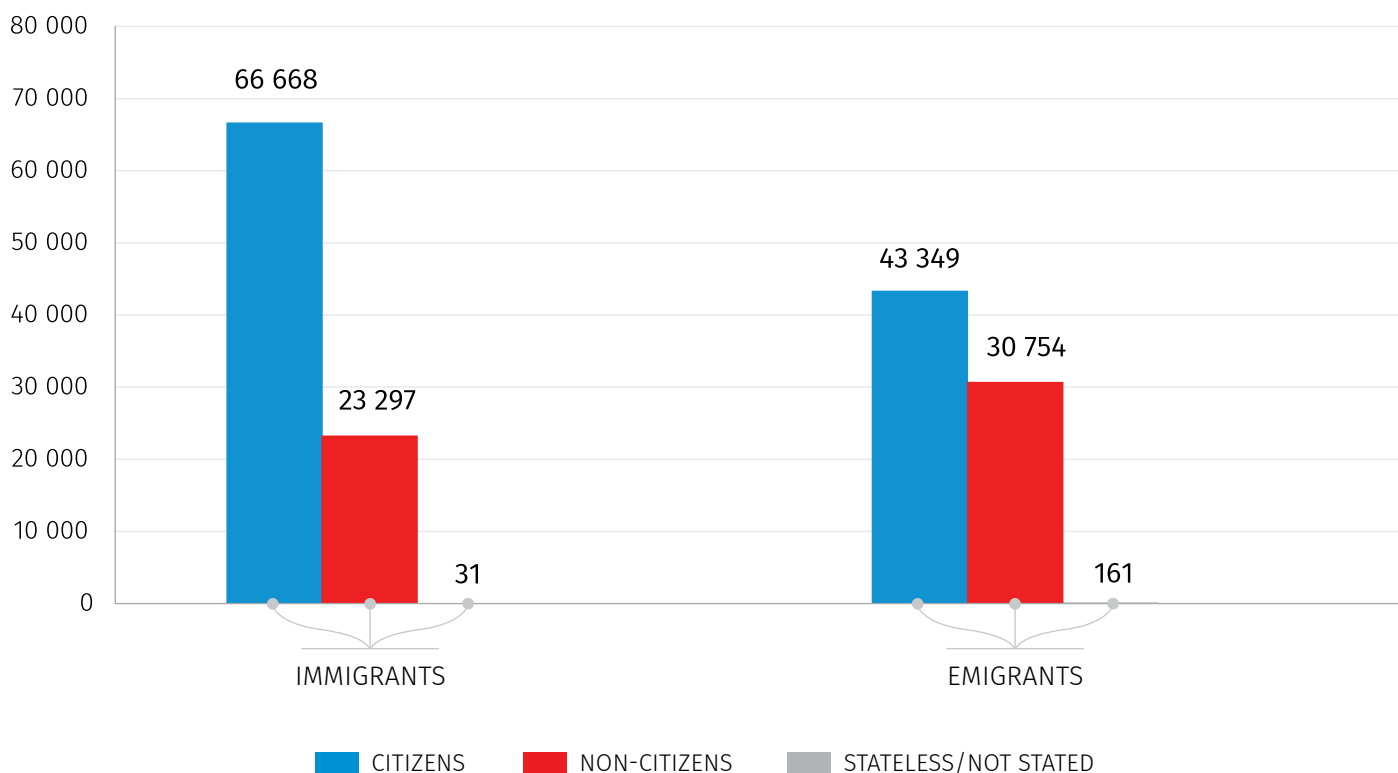


In 2020, 74.1 percent of immigrants and 58.4 percent of emigrants are citizens of Georgia.

29.04.2021

CHART №6

NUMBER OF IMMIGRANTS AND EMIGRANTS  
BY CITIZENSHIP, 2020



CONTACT PERSONS:

Shorena Tsiklauri, Tel.: 2 36 72 10 (601), E-mail: [shtsiklauri@geostat.ge](mailto:shtsiklauri@geostat.ge)

Mariam Kavelashvili, Tel.: 2 36 72 10 (020), E-mail: [mkavelashvili@geostat.ge](mailto:mkavelashvili@geostat.ge)