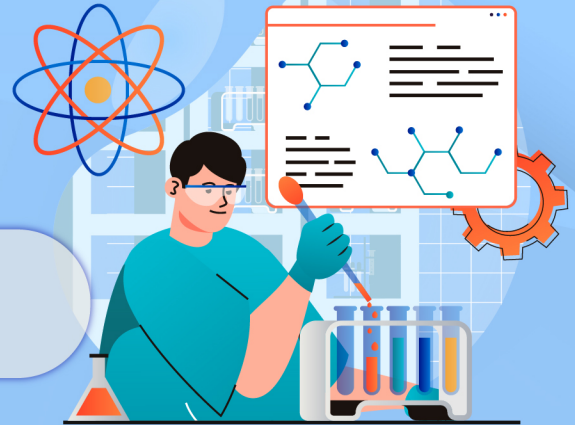




NUMBER OF INSTITUTIONS
59



TOTAL EXPENDITURES
151.1 MILLION. GEL



NUMBER OF EMPLOYEES

NUMBER OF RESEARCHERS



7 537
(54%)



6 503
(46%)



6 408
(53%)



5 622
(47%)

<25 25-34 35-44 45-54 55-64 65+



7.3% 13.8% 18.5% 21.4% 21.8% 17.3%



9.7% 14.6% 13.9% 16.6% 18.2% 26.9%

