

# SURVEY RESULTS FOR LIVESTOCK SLAUGHTERHOUSES, GRAIN STORAGE ELEVATORS AND COLD STORAGE FACILITIES III QUARTER, 2022


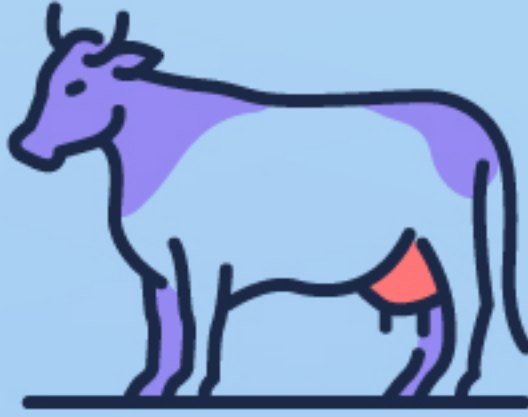


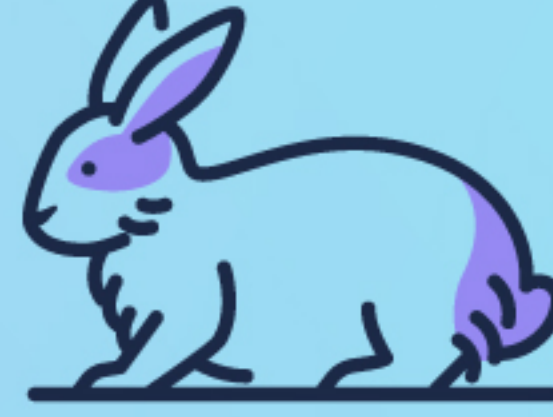



## HOW MANY FUNCTIONED:

## EMPLOYED PERSONS:

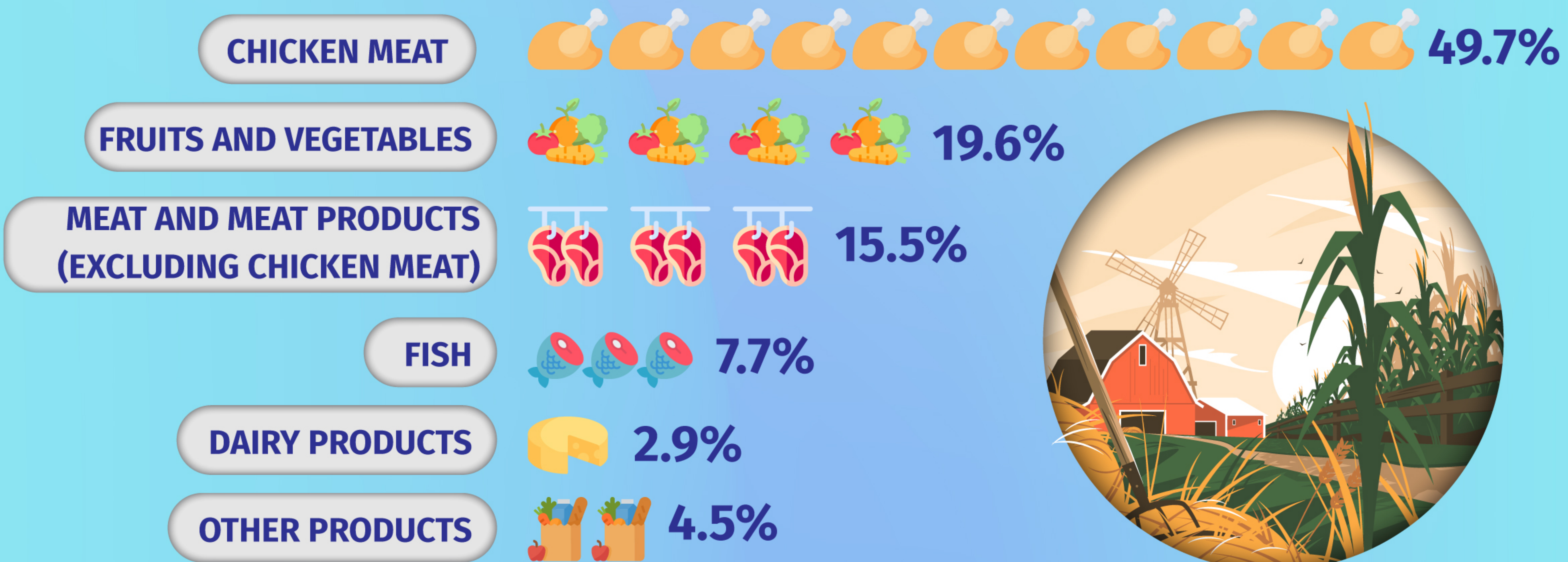
119	LIVESTOCK AND POULTRY SLAUGHTERHOUSES	1 061
271	COLD STORAGE FACILITIES	1 902
35	GRAIN STORAGE ELEVATORS	536

## HOW MANY CATTLE AND POULTRY WERE SLAUGHTERED

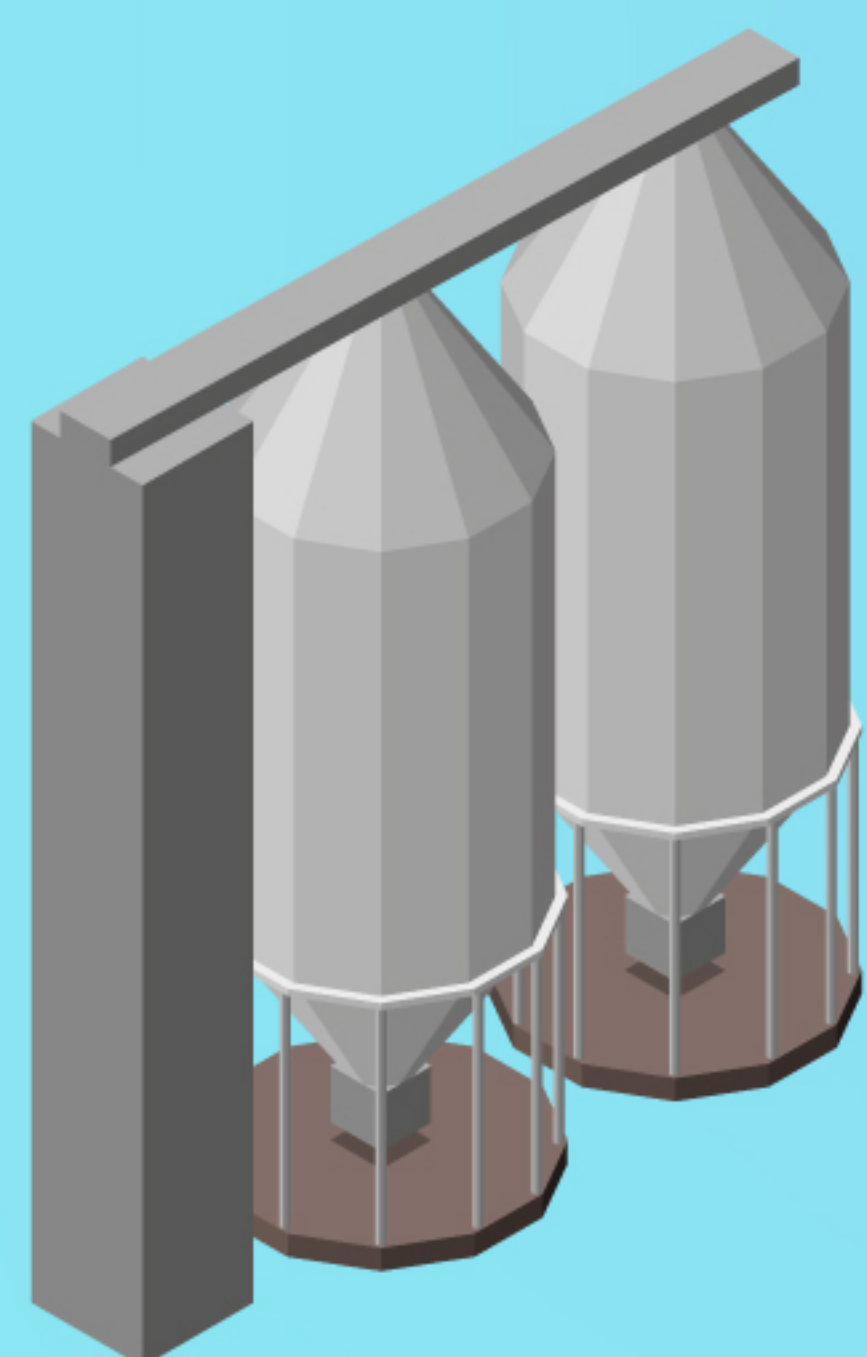
TSND. SOULS/ WINGS:	47.7	46.4	12.0	1.7	2 978.7
					
	CATTLE	PIG	SHEEP AND GOATS	OTHERS (RABBITS, HORSES, ETC.)	POULTRY
TONS	5 330.0	2 374.0	198.8	4.0	5 261.4

## HOW MANY MEATS WERE PRODUCED

### PRODUCTS STORED IN COLD STORAGE FACILITIES,%



### STORED IN ELEVATORS,%



WHEAT	OTHER PRODUCTS
71.3%	28.7%