

**NATIONAL STATISTICS OFFICE OF GEORGIA**

# **NUMBER OF POPULATION**

## **AS OF JANUARY 1**

## **2023**





# NATIONAL STATISTICS OFFICE OF GEORGIA

27.04.2023

## NUMBER OF POPULATION

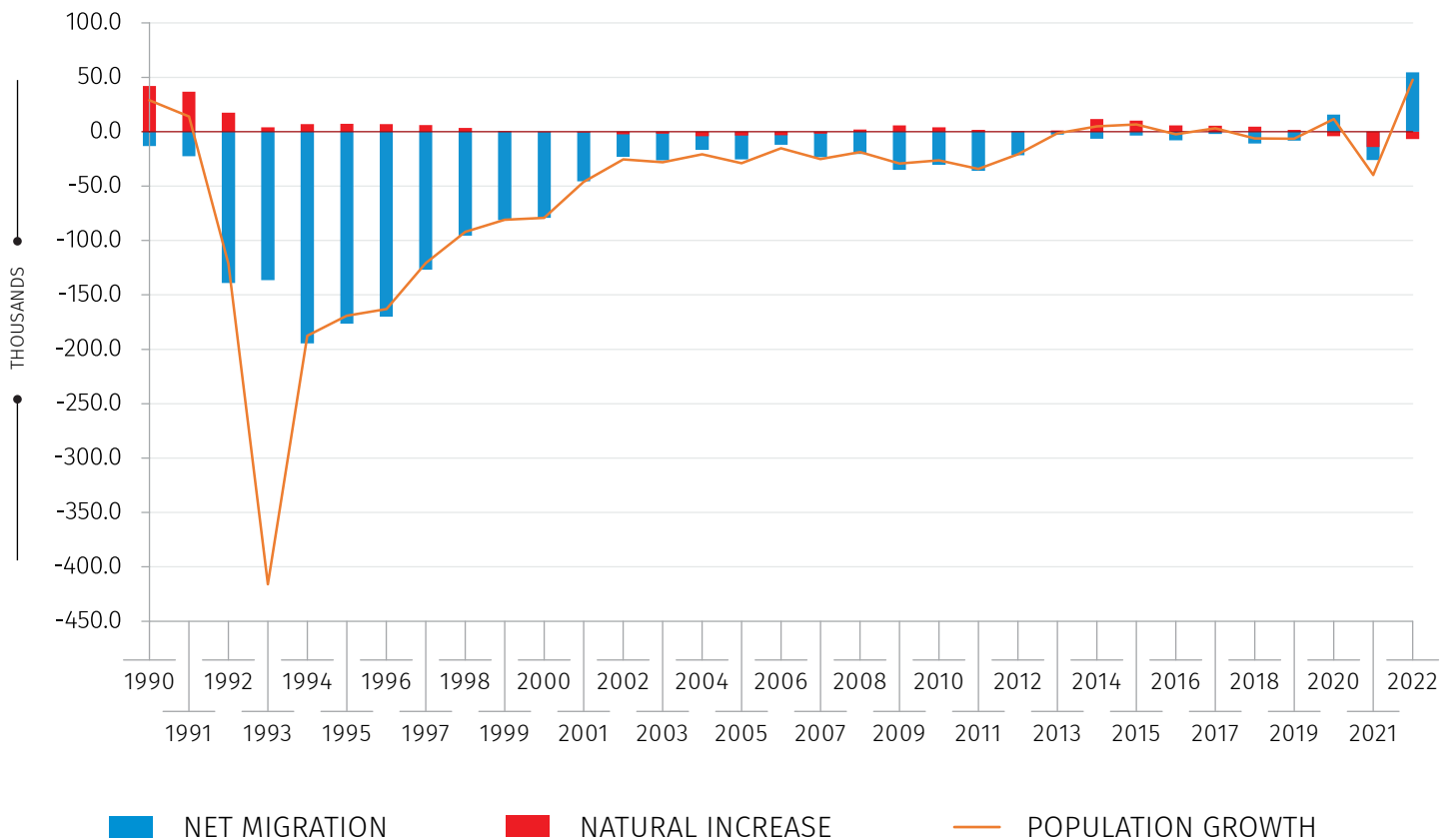
AS OF JANUARY 1, 2023<sup>1</sup>

As of January 1, 2023, the population of Georgia equals 3 736.4 thousand persons, registering a 1.3 percent increase from the previous year.

It should be mentioned that 2022 resulted in the negative natural increase (-6 799) and positive net migration (54 509).

CHART №1

### COMPONENTS OF POPULATION CHANGE, THOUSANDS



As of January 1, 2023, 60.4 percent of the population lives in urban settlements. At the same time, almost one third of total population lives in Tbilisi.

<sup>1</sup> Data do not cover occupied territories.

# NATIONAL STATISTICS OFFICE OF GEORGIA

27.04.2023

TABLE №1

## NUMBER OF POPULATION AS OF JANUARY 1, 2023 BY REGIONS AND TYPE OF SETTLEMENTS, THOUSANDS

REGIONS	TOTAL	AMONG THEM:	
		URBAN	RURAL
<b>GEORGIA</b>	<b>3 736.4</b>	<b>2 255.7</b>	<b>1 480.6</b>
C. Tbilisi	1 241.7	1 210.7	31.0
Adjara A.R.	361.4	210.4	151.0
Guria	104.3	30.9	73.4
Imereti	463.1	231.8	231.3
Kakheti	306.2	71.1	235.2
Mtskheta-Mtianeti	93.3	23.3	70.0
Racha-Lechkhumi and Kvemo Svaneti	27.1	6.7	20.5
Samegrelo-Zemo Svaneti	299.3	120.6	178.7
Samtskhe-Javakheti	147.4	54.0	93.3
Kvemo Kartli	442.8	197.5	245.3
Shida Kartli	249.8	98.8	151.0

**Note:** Individual figures may not sum up to the total due to rounding.

## NATIONAL STATISTICS OFFICE OF GEORGIA

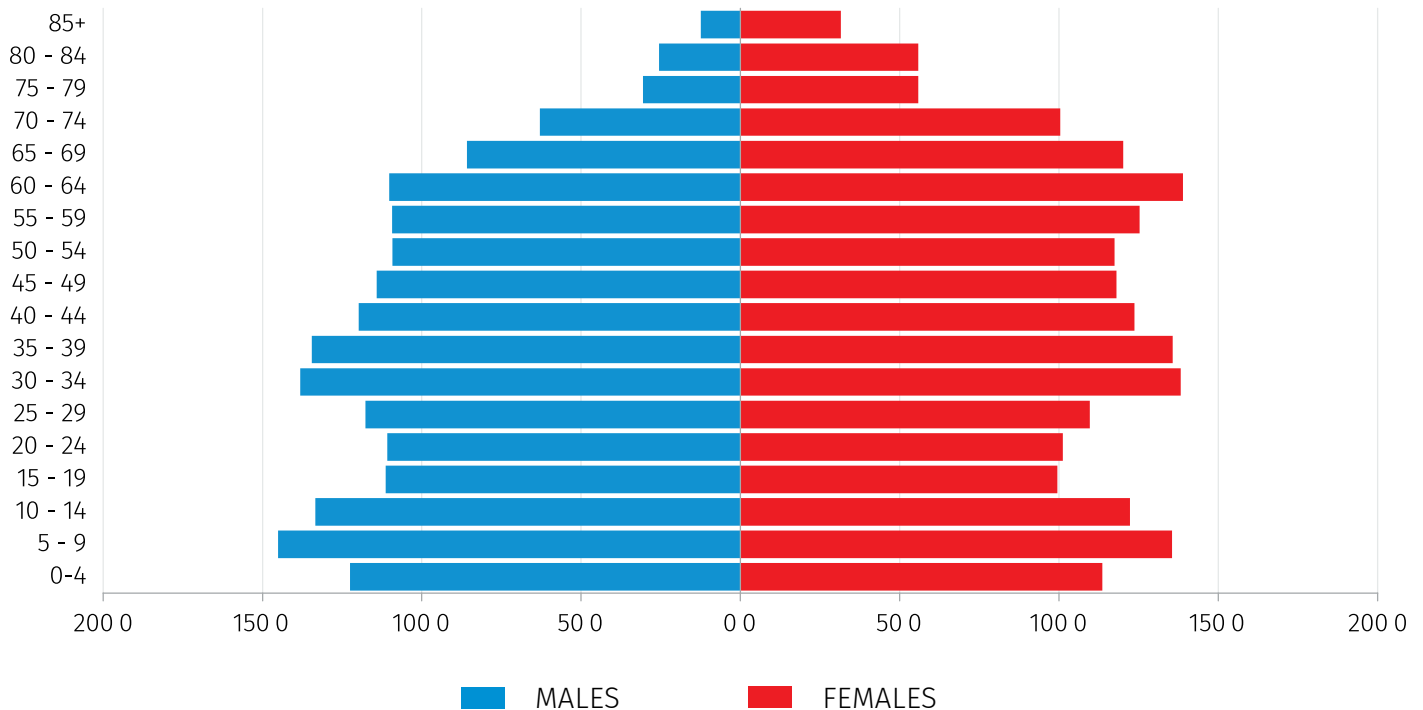
27.04.2023

### POPULATION BY AGE AND SEX

As of January 1, 2023, the share of persons aged 0-14 equals 20.7 percent, the share of the working-age population (15-64 years old) – 63.8 percent, while the share of elderly (65 years and older) – 15.6 percent.

CHART №2

### AGE AND SEX PYRAMID, AS OF JANUARY 1, 2023, THOUSANDS



## NATIONAL STATISTICS OFFICE OF GEORGIA

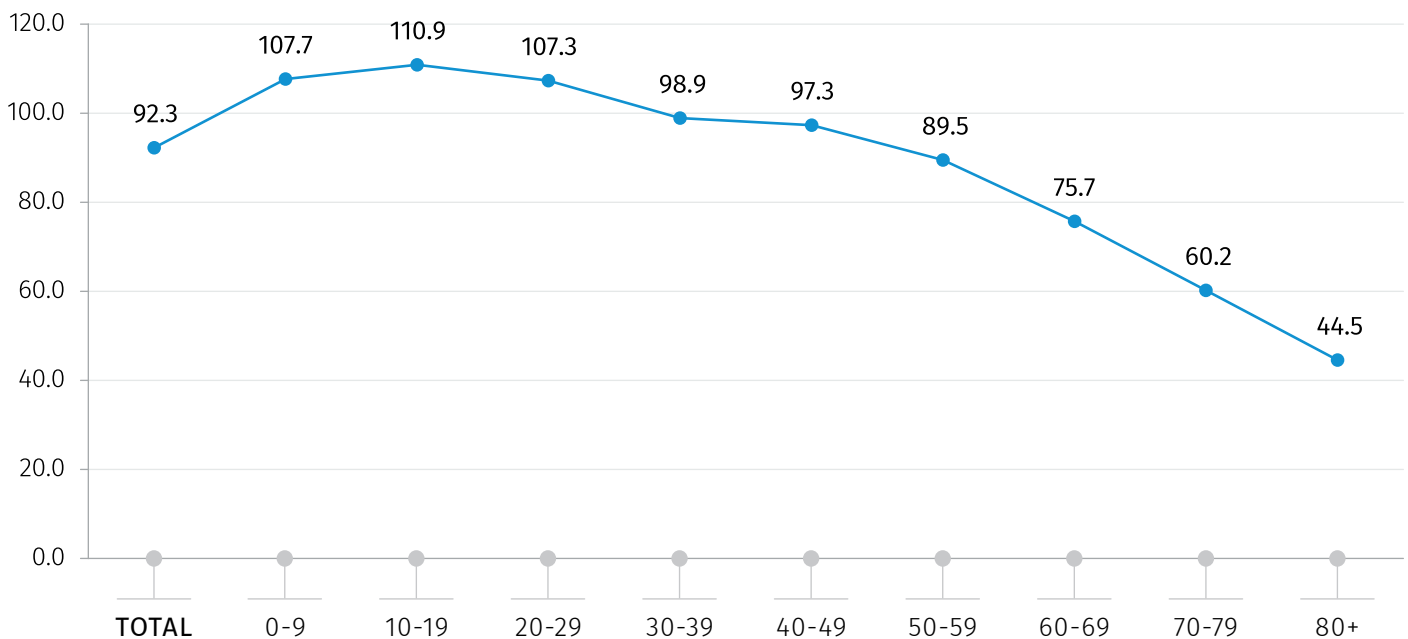
27.04.2023

As of January 1, 2023, the male population equaled 1 793.8 thousand persons, and the female population was 1 942.5 thousand persons. In Georgia, 48 percent are male and 52 percent are female population.

The sex ratio, i.e. number of men per 100 women, equals 92. It is worth mentioning, that under the age of 35 the number of men exceeds that of women, while the opposite situation is observed for the age group of 35 and over, which could be explained by females' higher life expectancy.

CHART №3

**SEX RATIO BY AGE GROUPS,  
AS OF JANUARY 1, 2023**

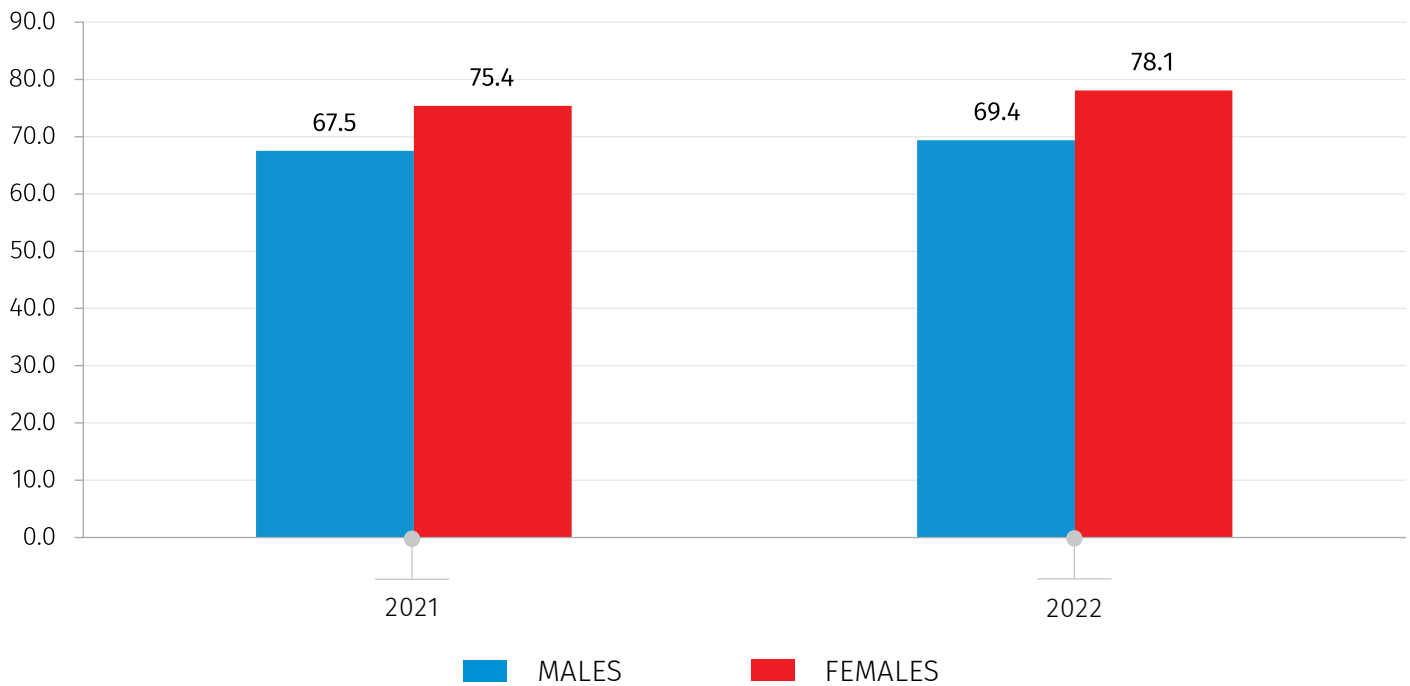


Compared to previous year, in 2022 the life expectancy at birth has increased by 2.3 units and equals 73.7 years, including 69.4 years for males and 78.1 years for females.

27.04.2023

CHART №4

LIFE EXPECTANCY AT BIRTH BY SEX,  
YEARS



As of January 1, 2023, the median age of population equals 38 years.

27.04.2023

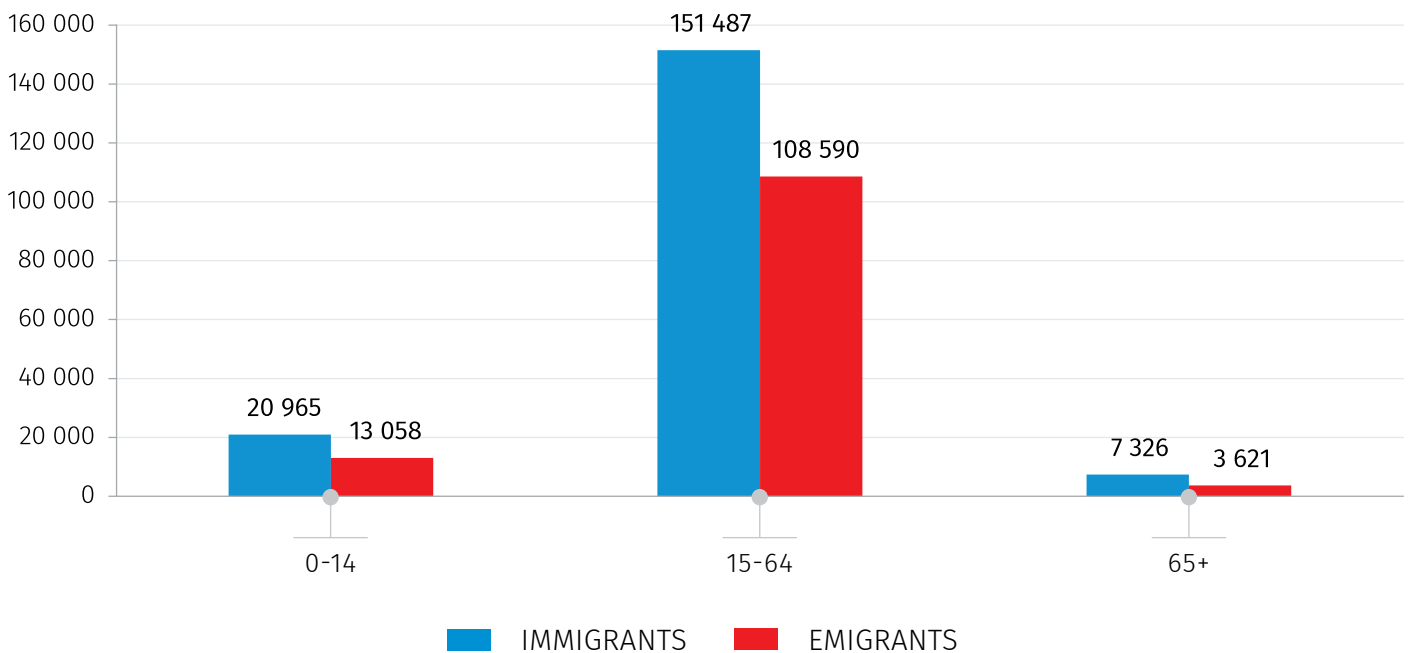
## MIGRATION

In 2022, the number of emigrants totals 125 269 persons increasing by 25.3 percent compared to the previous year. The number of immigrants increased by 142.9 percent, amounting to 179 778 persons.

In the same time period, 84.3 percent of immigrants and 86.7 percent of emigrants represent the working-age population (15-64 year age group).

CHART №5

**NUMBER OF IMMIGRANTS AND EMIGRANTS  
BY MAIN AGE GROUPS, 2022,  
PERSONS**



In 2022, 30.3 percent of immigrants and 80.5 percent of emigrants are citizens of Georgia.

## NATIONAL STATISTICS OFFICE OF GEORGIA

27.04.2023

TABLE №2

### NUMBER OF IMMIGRANTS AND EMIGRANTS BY CITIZENSHIP, 2022, PERSONS

COUNTRY OF CITIZENSHIP	IMMIGRANTS	EMIGRANTS
<b>TOTAL</b>	<b>179 778</b>	<b>125 269</b>
Georgia	54 405	100 802
Russian Federation	62 304	5 935
Ukraine	20 716	2 004
Belarus	13 361	852
India	3 948	1 412
Turkey	3 946	2 064
Non-citizens	21 038	12 147
Stateless / Not Stated	60	53

#### CONTACT PERSONS:

Donara Rukhadze, Tel.: 2 36 72 10 (686), E-mail: [drukhadze@geostat.ge](mailto:drukhadze@geostat.ge)

Mariam Kavelashvili, Tel.: 2 36 72 10 (020), E-mail: [mkavelashvili@geostat.ge](mailto:mkavelashvili@geostat.ge)