

NATIONAL STATISTICS OFFICE OF GEORGIA

NUMBER OF POPULATION AS OF JANUARY 1 2025



25.04.2025
www.geostat.ge

NATIONAL STATISTICS OFFICE OF GEORGIA

25.04.2025

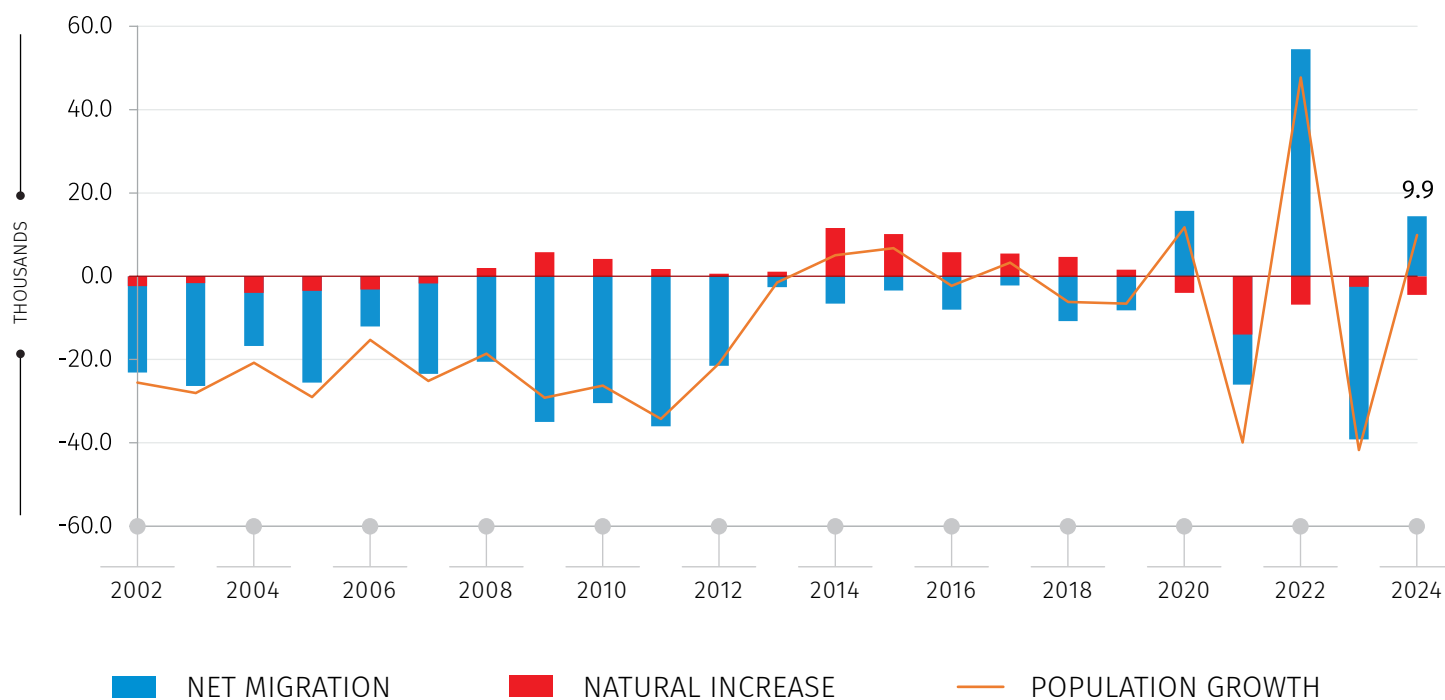
NUMBER OF POPULATION AS OF JANUARY 1, 2025¹

As of January 1, 2025, the population of Georgia equals 3 704.5 thousand persons, registering an increase of 9.9 thousand persons compared to the same period of the previous year.

It should be mentioned that 2024 resulted in the negative natural increase (-4 488) and positive net migration (14 386).

CHART №1

COMPONENTS OF POPULATION CHANGE, THOUSANDS



As of January 1, 2025, 61.5 percent of the population lives in urban settlements. At the same time, approximately one third of total population lives in c. Tbilisi.

¹ Data do not cover occupied territories.

NATIONAL STATISTICS OFFICE OF GEORGIA

25.04.2025

TABLE №1

NUMBER OF POPULATION AS OF JANUARY 1, 2025 BY REGIONS AND TYPE OF SETTLEMENTS, THOUSANDS

REGIONS	TOTAL	AMONG THEM:	
		URBAN	RURAL
GEORGIA	3 704.5	2 279.7	1 424.8
C. Tbilisi	1 282.6	1 251.7	30.9
Adjara A.R.	366.7	217.5	149.2
Guria	100.6	30.5	70.1
Imereti	433.3	219.5	213.8
Kakheti	298.5	70.3	228.2
Mtskheta-Mtianeti	92.7	23.9	68.8
Racha-Lechkhumi and Kvemo Svaneti	25.7	6.5	19.3
Samegrelo-Zemo Svaneti	283.3	115.4	167.8
Samtskhe-Javakheti	140.2	53.2	87.0
Kvemo Kartli	438.9	196.4	242.5
Shida Kartli	242.0	94.7	147.3

Note: Individual figures may not sum up to the total due to rounding.

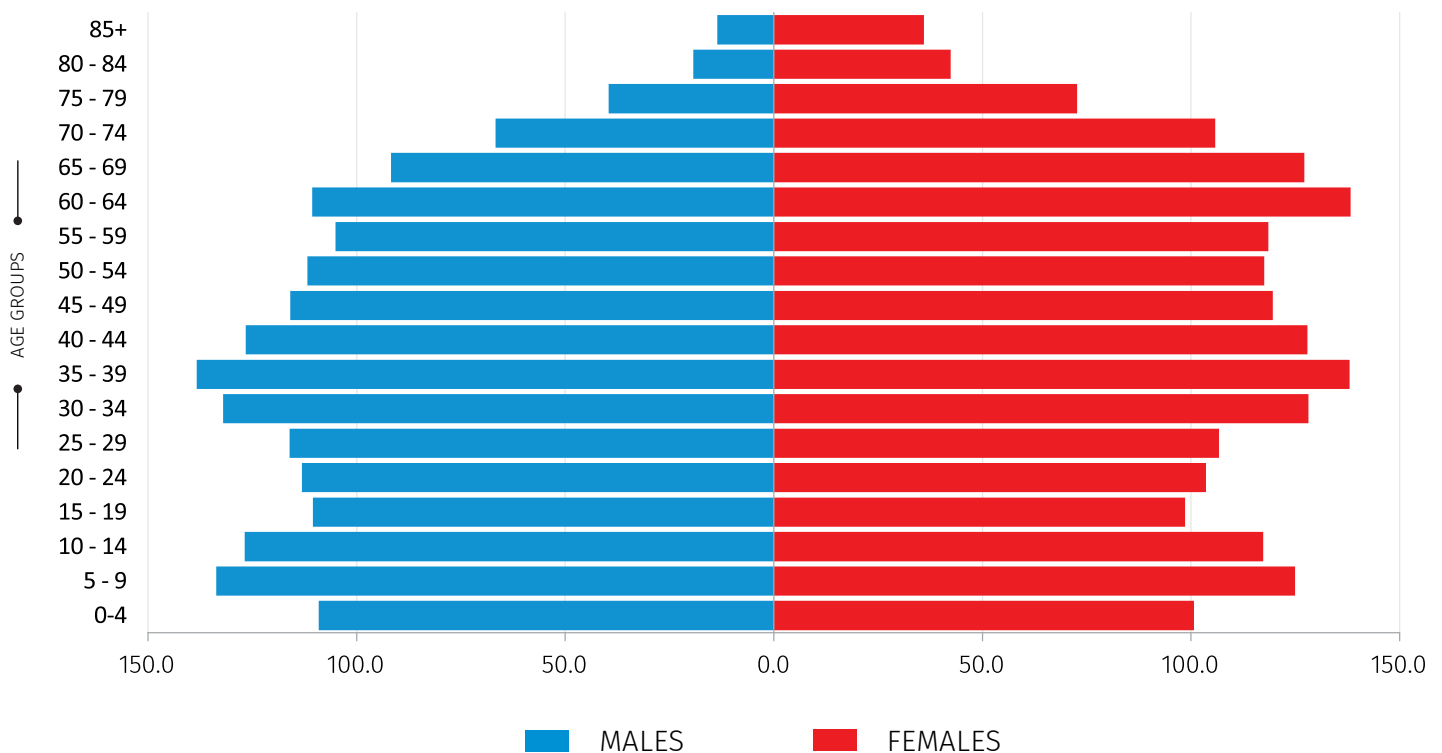
25.04.2025

POPULATION BY AGE AND SEX

As of January 1, 2025, the share of persons aged 0-14 equals 19.2 percent, the share of the working-age population (15-64 years old) – 64.2 percent, while the share of elderly (65 years and older) – 16.6 percent.

CHART №2

AGE AND SEX PYRAMID, AS OF JANUARY 1, 2025,
THOUSANDS



As of January 1, 2025, the male population equaled 1 780.6 thousand persons, and the female population was 1 923.9 thousand persons. In Georgia, 48 percent are male and 52 percent are female population.

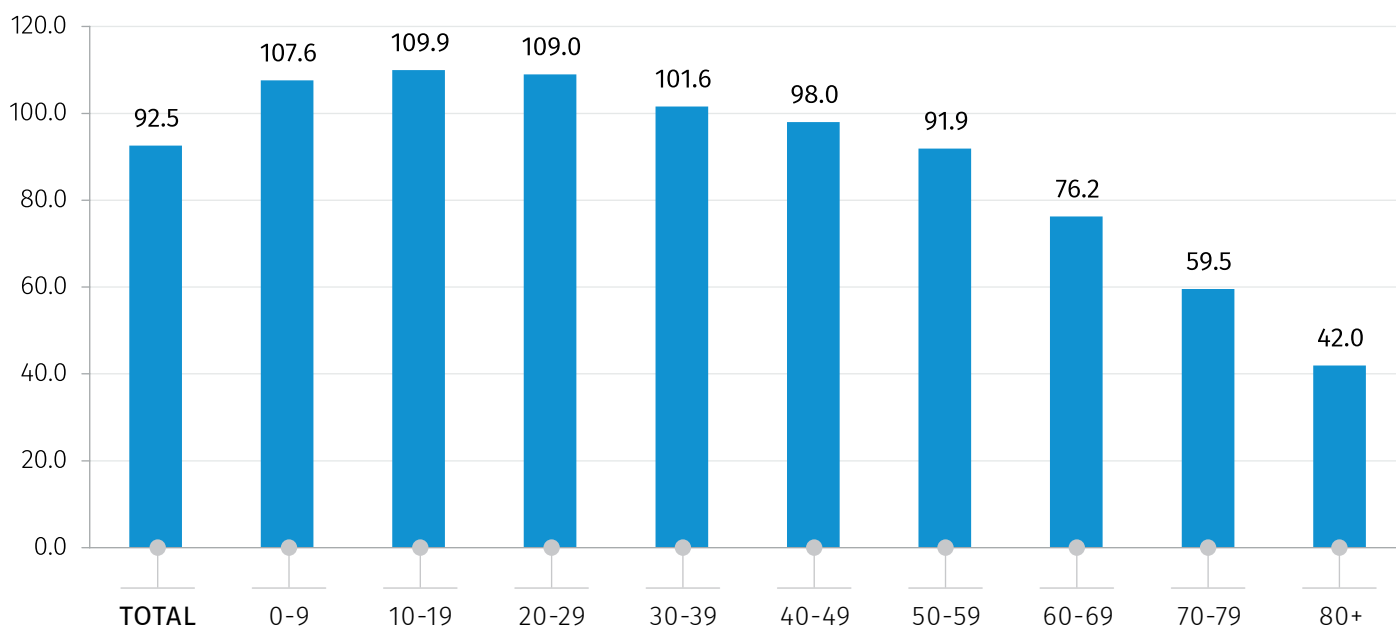
NATIONAL STATISTICS OFFICE OF GEORGIA

25.04.2025

The sex ratio, i.e. number of men per 100 women, equals 93. It is worth mentioning, that under the age of 40 the number of men exceeds that of women, while the opposite situation is observed for the age group of 40 and over, which could be explained by females' higher life expectancy.

CHART №3

SEX RATIO BY AGE GROUPS, AS OF JANUARY 1, 2025



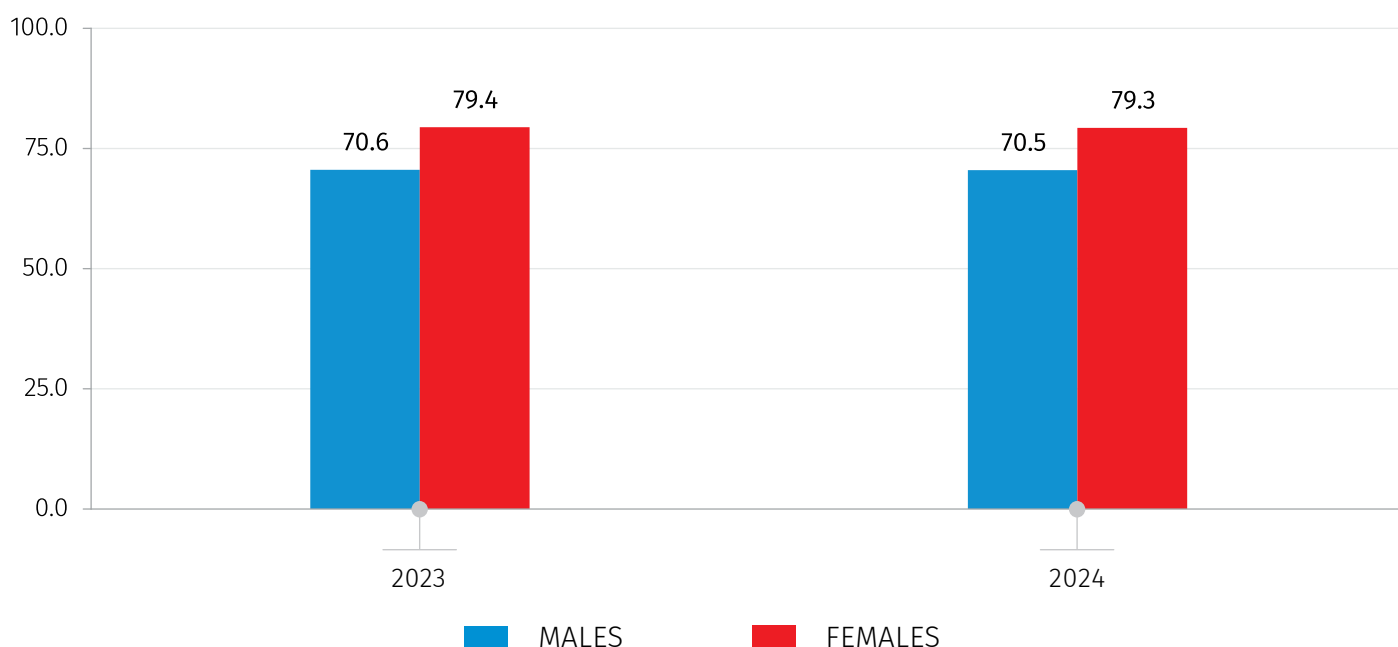
NATIONAL STATISTICS OFFICE OF GEORGIA

25.04.2025

Compared to previous year, in 2024 the life expectancy at birth remains almost unchanged and equals 74.9 years, including 70.5 years for males and 79.3 years for females.

CHART №4

LIFE EXPECTANCY AT BIRTH BY SEX,
YEARS



As of January 1, 2025, the median age of population equals 39 years.

25.04.2025

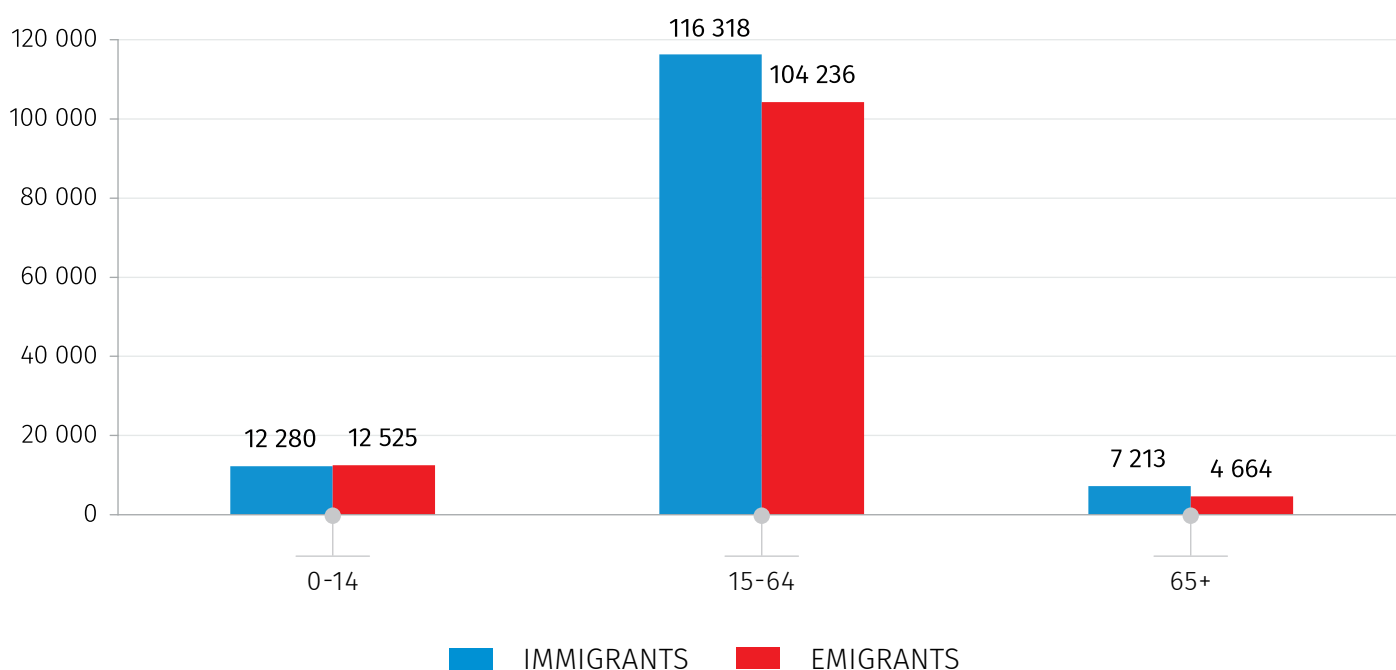
MIGRATION

In 2024, the number of emigrants totals 121 425 persons decreasing by 50.5 percent compared to the previous year. The number of immigrants decreased by 34.0 percent, amounting to 135 811 persons.

In the same time period, 85.6 percent of immigrants and 85.8 percent of emigrants represent the working-age population (15-64 year age group).

CHART №5

**NUMBER OF IMMIGRANTS AND EMIGRANTS BY MAIN AGE GROUPS, 2024,
PERSONS**



In 2024, 48.2 percent of immigrants and 53.2 percent of emigrants are citizens of Georgia.

NATIONAL STATISTICS OFFICE OF GEORGIA

25.04.2025

TABLE №2

NUMBER OF IMMIGRANTS AND EMIGRANTS BY CITIZENSHIP, 2024, PERSONS

CITIZENSHIP	IMMIGRANTS	EMIGRANTS
TOTAL	135 811	121 425
Georgia	65 436	64 594
Russian Federation	23 574	25 612
Ukraine	6 898	4 290
Turkey	5 214	2 631
India	4 594	3 213
Azerbaijan	4 556	2 209
Other countries	25 487	18 837
Stateless / Not Stated	52	39

CONTACT PERSONS:

Aleksandre Arabuli, Tel.: 2 36 72 10 (200); E-mail: aarabuli@geostat.ge

Mariam Kavelashvili, Tel.: 2 36 72 10 (020), E-mail: mkavelashvili@geostat.ge